



# 2014-2015 INTERNATIONAL PROSPECTUS

A New Zealand Government Funded Institute of Technology

**UCOL**<sup>®</sup>  
Universal College of Learning  
Te Pāe Mātauranga Ki Te Ao



# GET A FRESH VIEW OF THE WORLD

## FIVE EXCELLENT REASONS TO STUDY IN NEW ZEALAND

**LIVE** in a young, vibrant country with a world reputation for innovation.

**LEARN** in a progressive world-class education system.

**ENJOY** great weather, a beautiful landscape and a relaxed, outdoor lifestyle.

**GAIN** from lower study and living costs compared to most other countries.

**SUCCEED** with qualifications that are valued throughout the world.

### INFORMATION ON NEW ZEALAND

[www.newzealand.com](http://www.newzealand.com)

[www.newzealandeducated.com/int/en/why](http://www.newzealandeducated.com/int/en/why)



A New Zealand Government Funded Institute of Technology

## FIVE EXCELLENT REASONS TO STUDY AT UCOL

**LIVE** a brilliant lifestyle studying at one of UCOL's three campuses in the beautiful heartland of New Zealand.

**LEARN** at an award-winning Institute of Technology, owned by the New Zealand Government.

**ENJOY** lower regional living costs and easy access to mountains, beaches, rivers and native forests.

**GAIN** from UCOL's expertise as a leader in innovative and quality education, using world class teaching technology and experienced, handpicked lecturers.

**SUCCEED** with the help of UCOL's prize winning student support services and commitment to providing great services to international students.





# WE ARE HERE TO SUPPORT YOU

## UCOL INTERNATIONAL STAFF

Please contact us for more information.

Phone +64 6 952 7000

E-mail [internationalstudent@ucol.ac.nz](mailto:internationalstudent@ucol.ac.nz)

Web [www.ucol.ac.nz/international](http://www.ucol.ac.nz/international)

The team in our International Office will provide you with everything you need to help you succeed, including advice on enrolling and access to excellent support services and advice on making the most of your time at UCOL.



### BRUCE OSBORNE

#### Director International Business

Direct Dial: +64 6 965 3845

Mobile: +64 21 936 060

Email: [b.osborne@ucol.ac.nz](mailto:b.osborne@ucol.ac.nz)

Bruce has an academic background and is experienced in helping international students decide on their study plans. He regularly travels to other countries, including Malaysia, China and India, to talk to local schools and to students about their future and the world class education that is offered at UCOL in New Zealand.



### ADELE WILSON

#### International Student Coordinator

Phone: +64 6 952 7001 extn 70619

Mobile: +64 21 372 125

Email: [a.wilson@ucol.ac.nz](mailto:a.wilson@ucol.ac.nz)

Adele is an International Student Coordinator looking after the pastoral care needs of international students located on the UCOL Palmerston North campus.



### JULIA PEDLEY

#### Executive Dean International Relations

Phone: +64 6 952 7001 extn 70064

Mobile: +64 21 486 977

Email: [j.pedley@ucol.ac.nz](mailto:j.pedley@ucol.ac.nz)

As UCOL's Executive Dean International Relations, Julia recognises the welcome diversity which international students bring to both UCOL and the wider community. Julia is passionate about ensuring that UCOL is seen to be 'the venue of choice' for international students wishing to study in New Zealand. She works closely with the Director of International Business and Faculty Staff to provide our international students from over 30 different countries with a rewarding academic experience.



### DYLAN ANDERSON

#### International Student Coordinator

Phone: +64 6 952 7001 extn 70213

Mobile: +64 21 249 7773

Email: [d.anderson@ucol.ac.nz](mailto:d.anderson@ucol.ac.nz)

Dylan is an International Student Coordinator looking after the pastoral care needs of international students located on both UCOL Palmerston North and Whanganui campuses.



### FELICITY (YUYI) FAN

#### International Student Support (Chinese Students)

Phone: +64 6 965 3801 extn 65926

Email: [f.fan@ucol.ac.nz](mailto:f.fan@ucol.ac.nz)

Felicity's role is to assist with administration, English teaching and pastoral care support to Chinese students at UCOL. Felicity is situated on the UCOL Whanganui campus.

## INDIA LIAISON OFFICE



### SIMMI KRISHNAN

#### India Market Development Manager

Mobile: +9196 632 46809

Email: [eit.ucol.studyinnz@gmail.com](mailto:eit.ucol.studyinnz@gmail.com)

Address: S-622, South Block, Level 6, Manipal Centre, 47 Dickenson Road, Bangalore, India 560042



### GURU PRASAD

#### Executive Assistant India Office

Phone: 080 4206 6023/24

Email: [guruinzlo@gmail.com](mailto:guruinzlo@gmail.com)

UCOL has a dedicated liaison office located in Bangaluru, India.

This office is a joint venture with Eastern Institute of Technology (EIT). The office is managed by Ms Simmi Krishnan with Guru Prasad as Executive Assistant. The office covers the territories of Karnataka, Tamilnadu Andhra Pradesh and Gujarat.

If you are living in one of these areas Simmi and Guru are available to assist you with any queries you have in regards to UCOL programmes.



### ANDREA COLEMAN

#### Administration Assistant

Phone: +64 6 965 3801 extn 60885

Email: [a.coleman@ucol.ac.nz](mailto:a.coleman@ucol.ac.nz)

Andrea is the assistant to the Director of International Business and is located on the UCOL Whanganui Campus.



### INTERNATIONAL ENROLMENTS

#### UCOL Registry

Phone: +64 6 952 7000

**Mailbox for all international applications:**  
[internationalstudent@ucol.ac.nz](mailto:internationalstudent@ucol.ac.nz)

# UCOL CAMPUSES AND SURROUNDINGS

The Universal College of Learning has three campuses in Palmerston North, Whanganui and Masterton in the North Island of New Zealand.



## PALMERSTON NORTH

UCOL Palmerston North’s architecturally designed campus is situated in the heart of Palmerston North and is one of the city’s landmarks.

It’s Maori name Rangitaane Tikaraina ki te Matauranga, translates in part as “straight pathway to education.” The campus architecture combines historic buildings with state-of-the-art facilities. A new Learning Hub includes a contemporary, student friendly lounge area, more than 60 computer stations, wireless access for laptops for your use and access to our excellent library. There is also barista coffee and light food available for purchase.

The lifestyle in Palmerston North is easy and affordable. Walking and biking are popular and you can enjoy a range of cultural and outdoor activities in a safe, sustainable environment. With plenty to do such as dining, shopping, biking, fishing and river swimming, motorsport and other outdoor pursuits all at an affordable cost, Palmerston North really is Student City.



## WHANGANUI

Whanganui UCOL’s campus is equipped with state-of-the-art facilities and is situated alongside the beautiful Whanganui River and Moutoa Gardens.

Whanganui UCOL’s campus is equipped with state-of-the-art facilities and is situated alongside the beautiful Whanganui River and Moutoa Gardens. Whanganui Iwi named the UCOL campus ‘Matapihi ki te Ao’ which means “window of opportunity to the world”. The campus is one block from the main shopping street and cafes and across the road from the Whanganui River. The Whanganui Quay School of the Arts, located on Wicksteed Street, houses UCOL’s Arts programmes, while the main campus houses Health and Science, Vocational and Design programmes.

Whanganui is located on the West Coast of the North Island of New Zealand. It is a peaceful river-side city, with beautiful parks, beaches, gardens and lakes. Whanganui is also host to a distinguished culture focused around creativity and arts.



## STUDENT STORIES



### **NITIN NISCHAL** **BACHELOR OF INFORMATION AND COMMUNICATIONS TECHNOLOGY (APPLIED)**

Twenty five year old Nitin Nischal wanted to study IT in New Zealand to gain a global perspective on his chosen career.

Born in Mumbai India, Nitin graduated from UCOL with a Bachelor of Information and Communications Technology (BICT) and now works as an Information Technology Support Analyst at Massey University.

"I'm really enjoying my job because I can implement the skills and knowledge I have learnt," he says.

During his last semester of study at UCOL, Nitin received an internship for five months at Datawest, an IT company in Palmerston North. "This was my first professional job in New Zealand and I quickly learnt one thing; always adjust according to your environment. Don't be depending on others; take responsibility on your shoulders."

Nitin says UCOL offers practical knowledge that can be applied in any workplace. "New Zealand has a good quality education system and UCOL has some of the best staff and lecturers I have ever seen in my life."

"New Zealanders are awesome people and always happy to help you when you are in need."

Prior to coming to New Zealand, Nitin worked in his family's retail business that his elder brother now runs. "One thing I have really missed in New Zealand is my Mum's food. I am really thankful to my parents and family for their help and support."



### **RAJWANT KAUR** **NATIONAL DIPLOMA IN SCIENCE**

UCOL National Diploma in Science graduate Rajwant Kaur is settling in to an exciting full-time position with New Zealand dairy company Fonterra.

Rajwant won the position of Microbiology Lab Technician from a strong field of nearly 200 applicants, after completing the two year National Diploma of Science at UCOL in Palmerston North.

She has just moved to Hawera in the Taranaki province to take up the job with Fonterra, the world's largest diversified milk processing company. Fonterra is one of the world's top producers of dairy nutrition for export, including milk powders, cheese and butter, with annual revenue of NZ\$20 billion.

Rajwant believes her study at UCOL gave her a huge advantage when she applied for the position. "The Diploma programme put a lot of emphasis on practical skills as well as theory. When I was interviewed at Fonterra the practical training I got at UCOL allowed me to do well in the practical test that was part of the job interview."

She says she's also grateful for the career advice she was given by UCOL lecturers, including how to go about applying for jobs. "At UCOL, they care a lot about their international students, so I was given plenty of support throughout the programme. That was very beneficial for me and really helps you to succeed!"

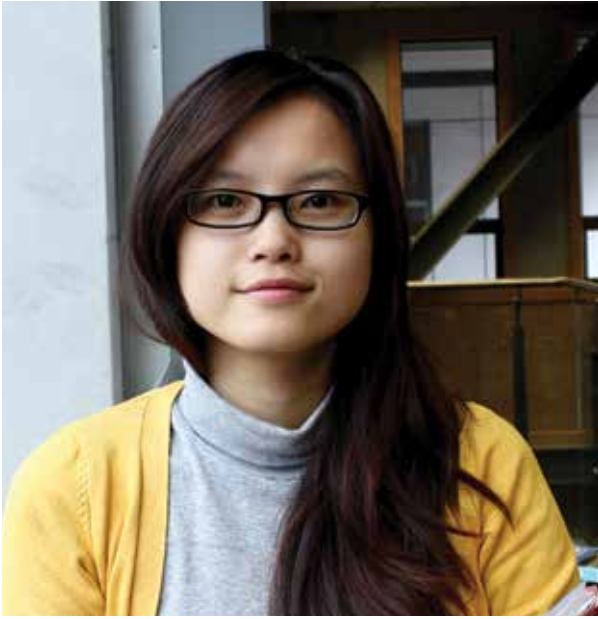
Now 22, Rajwant arrived in New Zealand from Chandigarh in the northern part of India in July 2009 to study at UCOL. She came straight from high school and chose to study at UCOL because of the emphasis on practical skills in the National Diploma in Science programme, and because the fees were reasonable.

With her new job now secured, she intends to stay on to work in New Zealand. "But I hope my family will come over to visit me often," she says.

UCOL's National Diploma in Science prepares graduates to work with leading scientists in a wide range of scientific disciplines including biochemistry, chemistry, immunology, microbiology and molecular biology.



# STUDENT STORIES



## ROE CIE SOON BACHELOR OF COMPUTER GRAPHIC DESIGN

Bachelor of Computer Graphic Design student at UCOL, Roe Cie Soon has wanted to study in New Zealand since she was a child. "I love the environment in New Zealand and UCOL Whanganui has the best environment for studying because there is the Whanganui River right beside the school as well as quite a few art galleries nearby", she said.

Before coming to New Zealand Roe Cie lived in Malaysia's capital city, Kuala Lumpur and worked in an art studio. "I enjoyed my work but studying in UCOL is much more enjoyable", she said.

Roe Cie has enjoyed drawing and painting since she was a child. She still loves it and feels a sudden peacefulness come over her whenever she starts to draw. She enjoys travelling as well as drawing and says that is why she is at UCOL in New Zealand, "so I can be a part of a different culture and be inspired by it."

She says one of the best parts of studying at UCOL is the wonderful library with many collections of design books that she finds very useful for her study.

When Roe Cie graduates in 2013 her future goal is simple: "To enjoy life, while doing what I love."



## THARIQ RIFKI DIPLOMA IN INFORMATION AND COMMUNICATIONS TECHNOLOGY

Thariq Rifki says his UCOL qualification, the Diploma in Information and Communications Technology, helped him a lot in finding his job as Help Desk Analyst at the Open Polytechnic of New Zealand.

Before coming to study in New Zealand, Sri Lankan born Thariq completed a Diploma in Computer Hardware Engineering and was inspired to pursue a career in IT.

The 21 year old says he did a lot of research on study options before finally deciding on UCOL. He also met Bruce Osborne, UCOL's Director of International Business, in person at a seminar in his home country Sri Lanka, and was able to discuss the opportunities available to him.

"My time at UCOL was challenging, interesting and enjoyable. The lecturers and staff were always nice, friendly and very helpful," says Thariq. "I found that the study was very hands-on and practical and this gave me lots of practice before entering the IT industry".

"Because UCOL is situated in the centre of Palmerston North, the 'Student City' of New Zealand, it makes things much easier as everything is within a short distance. Palmerston North is the best place to be a student," he says.

Thariq missed his family when he first came to New Zealand but he soon made many new friends and that helped him a lot. "My parents have been right behind me, especially my Mum, and have supported me in the successes I have achieved so far."

In his job at the Open Polytechnic, Thariq has the opportunity to learn new systems with the support of the Senior Engineers. He also assists the students, staff and adjunct markers deal with technical difficulties.

"Another great part about my job is that, as a staff member, I am able to enrol in any Open Polytechnic course free of charge!"

Thariq intends to build on his IT skills in his current role, and work towards a senior position in the company.



Whanganui Campus Library



The Square, Palmerston North



Manawatu Wind Farms

- 10 **BUSINESS**
- 12 **CHEF TRAINING**
- 14 **ELECTRICAL ENGINEERING**
- 16 **FASHION**
- 18 **FINE ARTS**
- 22 **FURNITURE MAKING**
- 24 **GLASS**
- 26 **GRAPHIC DESIGN**
- 32 **INFORMATION & COMMUNICATIONS TECHNOLOGY (ICT)**
- 36 **NURSING**
- 40 **PHOTOGRAPHY**
- 42 **SCIENCE**
- 43 **SPORT & EXERCISE**
- 46 **VETERINARY NURSING**
- 48 **VISUAL IMAGING**
- 50 **LE CORDON BLEU**





The Atrium, Whanganui Campus



Sarjeant Gallery, Whanganui



The Learning Hub, Palmerston North Campus

52 **ENGLISH LANGUAGE**

54 **OTHER PROGRAMMES  
OFFERED BY UCOL**

55 **INTERNATIONAL STUDENT  
SUPPORT & SERVICES**

59 **ADDITIONAL HELP**

60 **STEPS TO APPLY FOR A  
STUDENT VISA**

61 **INTERNATIONAL STUDENT  
FEE REFUND POLICY**

63 **LATE START FEE**

64 **TERMS AND CONDITIONS  
FOR INTERNATIONAL  
STUDENTS**

66 **PROGRAMME MATRIX**

**APPLICATION FORM**  
SEE CENTRE PULL OUT

# NEW ZEALAND DIPLOMA IN BUSINESS / LEVEL 6

<b>STUDY OPTIONS</b>	Full time
<b>DURATION</b>	2 years
<b>INTAKES</b>	February, July
<b>LOCATIONS</b>	Palmerston North, Whanganui
<b>FEES</b>	NZ\$14,610
<b>IELTS</b>	6.0 (academic equivalency will be assessed on application)

## CAREER & STUDY OUTCOMES

- human resource management
- management
- accounting technician
- accounting assistant
- business administration
- opportunities to study further at Degree level

## Aim higher in business with the New Zealand Diploma in Business!

Does the exciting, diverse and constantly changing nature of the business world interest you? Are you striving towards a career where you can make the most out of your skills in problem solving, people management, critical thinking and communication? Successful graduates of the New Zealand Diploma in Business will be able to seek employment opportunities in all sectors of business including: accounting technician, management and human resource management.

### FURTHER INFORMATION

To achieve the New Zealand Diploma in Business you need to gain 240 credits. You will need to complete six of the following core papers (120 credits) and a further 80 credits at Level 6. The remaining credits may be gained from Level 4, 5, or 6 papers depending on your area of specialisation.

Accounting specialisation papers: 400, 501, 510, 520, 530, 550, 560, 601, 602, 603 or 606, plus two optional papers, one at 400 or 500 level and one at 600 level.

Management specialisation papers: 400, 510, 520, 530, 541, 550, 560, 630, 633, 636, plus one optional paper at any level and one optional paper at 600 level.

### LEVEL 4 & 5 - CORE PAPERS

PAPER No.	PAPER	CREDITS
400	Accounting Principles	20
510	Introduction to Commercial Law	20
520	The Economic Environment	20
530	Organisation and Management	20
541	Fundamentals of Marketing	20
550	Business Computing	20
560	Business Communication	20

### LEVEL 4 & 5 - ELECTIVE PAPERS

PAPER No.	PAPER	CREDITS
435	Fundamentals of Small Business	20
501	Accounting Practices	20

### LEVEL 6 - CORE PAPERS

PAPER No.	PAPER	CREDITS
601	Financial Accounting	20
602	Management Accounting	20
603	Business Finance	20
606	Taxation	20
630	Leadership	20
633	Human Resource Management	20
635	Employment Relations	20
636	Applied Management	20

### ADVICE & GUIDANCE

Students need reasonable English language skills to cope with theory, reading and assignments and the maturity for self-directed work in order to achieve the programme.







# DIPLOMA IN PROFESSIONAL CHEF PRACTICE / LEVEL 5

<b>STUDY OPTIONS</b>	Full time
<b>DURATION</b>	2 years
<b>INTAKES</b>	Various
<b>LOCATIONS</b>	Whanganui
<b>FEES</b>	NZ\$18,490
<b>IELTS</b>	5.5 (academic equivalency will be assessed on application)

## CAREER OUTCOMES

- Fine dining restaurants
- Restaurants
- Cafes
- Bars
- Hotels
- Function catering
- Cruise liners
- Catering companies
- Airlines
- Commercial catering businesses

## STUDY PATHWAYS



New Zealand is well known for its wonderful café culture and fantastic fine dining.

Skilled and creative professional individuals that can support this reputation are in demand. If you have a passion for food and working as a team, this is the career for you!

The qualification is delivered over a 2 year period and encompasses two National Certificates as well as two City and Guild of London International Qualifications. The programme provides students with foundation, intermediate and advanced skills in the field of culinary arts. Delivery of this programme is from UCOL's Whanganui Campus, in its purpose built kitchen and restaurant.

## Year 1

In the first semester of the year students will learn from our experienced chefs about the fundamentals of professional cookery and complete the National Certificate in Hospitality (Basic Cookery) Level 3. In the second semester students will complete the first part of the National Certificate in Hospitality (Cookery) Level 4 and also have the opportunity to complete the City and Guilds of London International Certificate in Food Preparation and Service. The focus of study for the first year is establishing foundation and intermediate skills in the preparation, cooking and service of various foods. To put the theory into practice you'll also cook for and learn skills within UCOL's training restaurant, 'Visions On Rutland'.

## Year 2

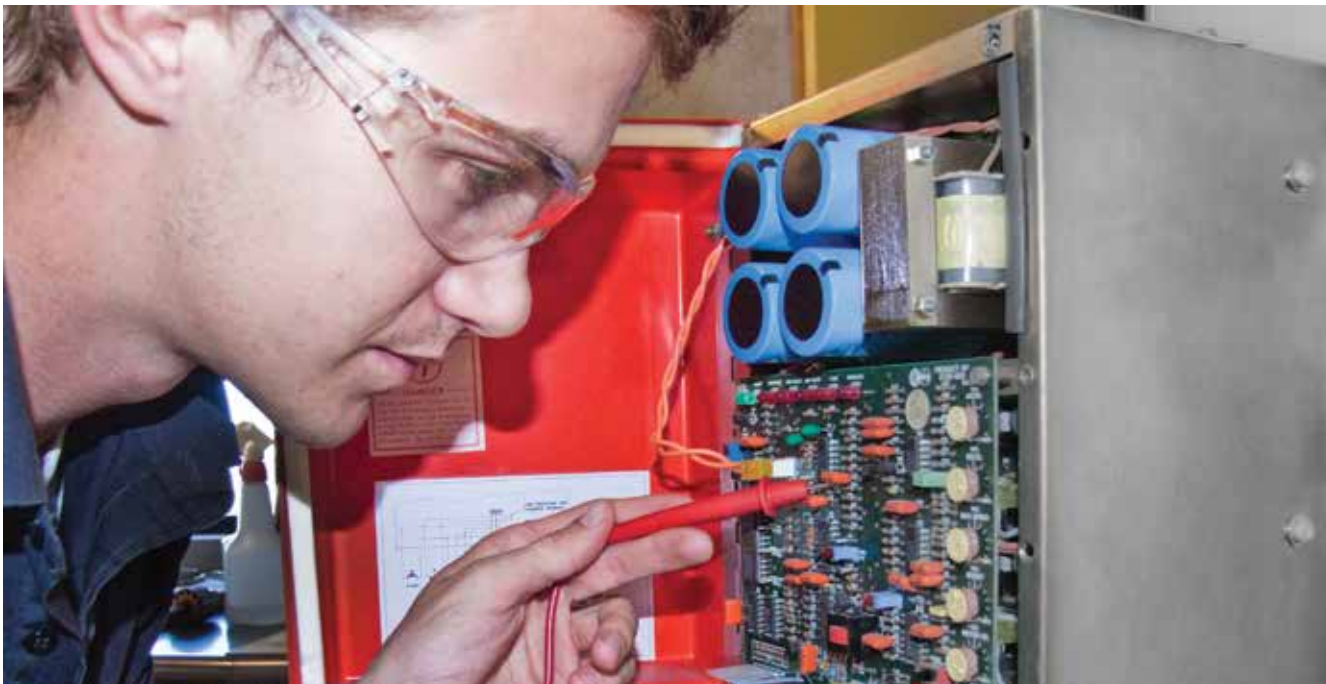
The second year of this programme continues from where the first year ends. Students will complete the National Certificate in Hospitality (Cookery) Level 4 in semester 1 and will go on to study at Level 5 in semester 2 and complete the Diploma in Professional Chef Practice Level 5. The focus of study for the year is advanced culinary processes including patisserie as well as kitchen practices. In semester 2 students will be involved in applying knowledge and the research of foods and processes, to application and practice within a professional kitchen. At the end of the programme students will have the opportunity to complete the City and Guilds of London International Diploma in Culinary Arts.

## YEAR 1

PAPER	CREDITS
Hospitality Fundamentals	14
Introduction to Kitchen Practice	19
Intermediate Cookery 1	21
Intermediate Cookery 2	22
Advanced Cookery 1	24
Advanced Cookery 2	24
City and Guilds Certificate in Food Preparation and Cooking	-

## YEAR 2

PAPER	CREDITS
Advanced Cookery 3	24
Advanced Kitchen Practice	14
Advanced Patisserie	14
City and Guilds Diploma in Food Preparation and Cooking	-
Culinary Research	23
Regional Food and Wine	23
Professional Patisserie	10
Food Preparation and Cookery in industry	10
Professional Chef Practice in industry	10



## NEW ZEALAND DIPLOMA IN ENGINEERING - ELECTRICAL (POWER SPECIALISATION) / LEVEL 6

<b>STUDY OPTIONS</b>	Full time
<b>DURATION</b>	2 years
<b>INTAKES</b>	February
<b>LOCATIONS</b>	Palmerston North
<b>FEES</b>	<b>NZ\$18,220</b>
<b>IELTS</b>	6.0 (academic equivalency will be assessed on application)

### CAREER & STUDY OUTCOMES

- electronic and electrical design
- industrial automation and control
- power system design
- continue on to study the New Zealand Diploma in Engineering Practice or the Bachelor of Engineering Technology

**This electrical engineering qualification is for people who want to gain the knowledge and skills needed to be engineering technicians in a wide range of cutting edge, high-tech industries.**

UCOL offers the New Zealand Diploma in Engineering - Electrical (Power Specialisation) Level 6, the newest Technician Engineering qualification available in New Zealand. This qualification is also supported by the Institution of Professional Engineers New Zealand (IPENZ). This Diploma will take time off an engineering Degree should you wish to continue onto further study. The qualification is aligning with the Dublin Accord to give you international recognition meaning you may be able to work in Canada, Ireland and the UK! People who already have advanced knowledge in Engineering will benefit from the practical content of this programme. This qualification opens up fantastic job opportunities both in New Zealand and overseas in the electrical and power industries so enrol now!

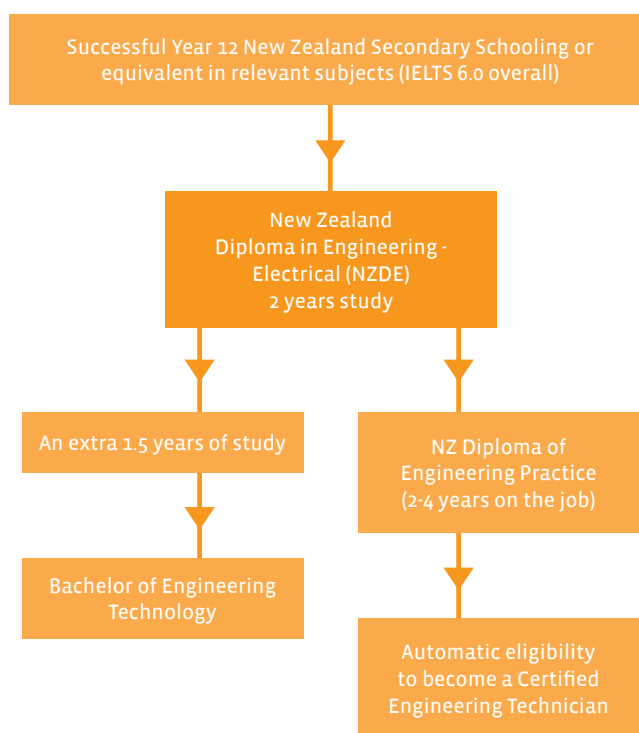


**YEAR 1**

PAPER No.	PAPER	CREDITS
DE4101	Engineering Fundamentals	15
DE4102	Engineering Mathematics	15
DE4103	Technical Literacy	15
DE4401	Electrical and Electronic Principles	15
DE5401	Power Engineering	15
DE5402	PLC Programming 1	15
DE4402	Electrical and Electronic Applications	15
DE5403	Electrical and Electronic Principles 2	15

**YEAR 2**

PAPER No.	PAPER	CREDITS
DE5404	Electrical Machines	15
DE5416	Emerging Technologies and Systems	15
DE5413	Power Protection Systems 1	15
DE6407	Power Electronics	15
DE6499	Engineering Project (Electrical)	15
DE6101	Engineering Management	15
DE6401	Power Systems	15
DE6411	PLC Programming 2	15

**PATHWAYS FOR ENGINEERING QUALIFICATIONS**

# BACHELOR OF FASHION / LEVEL 7

<b>STUDY OPTIONS</b>	Full time
<b>DURATION</b>	3 years
<b>INTAKES</b>	February
<b>LOCATIONS</b>	Whanganui
<b>FEES</b>	NZ\$18,755
<b>IELTS</b>	6.0 (academic equivalency will be assessed on application)

## CAREER & STUDY OUTCOMES

- designers
- manufacturing
- pattern makers
- computer-aided (cad) pattern makers
- merchandisers
- buyers
- graphic designers
- stylists
- sample makers
- pre-production managers
- fabric buyers
- graders
- marker makers
- retail managers and assistants
- entrepreneurs
- company owners

## Explore the design process from concept to completion in this three year full time programme.

Home to one of New Zealand's top fashion schools, Whanganui UCOL's custom designed and superbly equipped School of Fashion will be your classroom, studio, production facility and research centre. The Bachelor of Fashion is a dynamic Degree which aims to educate you in the processes of design, production and analysis. It offers you the opportunity to develop your artistic knowledge and gain the skills to pursue a career within the fashion industry. You will be expected to produce a collection of garments for the annual fashion show, plus a professional design portfolio. All this will enable you to secure a job in the fashion industry or start your own label – the opportunities in the fast moving world of fashion are endless.

## PORTFOLIO SPECIFICATIONS

A portfolio which demonstrates previous engagement in creative activity will be required.

Portfolios can take a number of different formats, and each will be considered on a case by case basis.

Please contact the Associate Dean (Creative) if you need further guidance with preparing or presenting a portfolio.

### YEAR 1 – LEVEL 5

PAPER No.	PAPER	CREDITS
83.530	Design and Production I	30
86.533	Art and Design History	15
86.534	Design Practical	15
86.535	Drawing	15
83.531	Design and Production II	30
83.532	Textile Technology	15

### YEAR 2 – LEVEL 6

PAPER No.	PAPER	CREDITS
83.630	Design and Production III	30
86.632	Drawing II	15
83.615	Visual Media	15
86.633	Business and Marketing	15
83.631	Design and Production IV	30
83.614	Production Technology	15

### YEAR 3 – LEVEL 7

PAPER No.	PAPER	CREDITS
83.711	Final Major Project (FMP) - Concept Investigation	15
83.714	Industry Placement	15
83.730	Mini Collection	15
83.733	Fabric Print	15
83.721	Final Major Project (FMP)	30
83.731	Portfolio Design	15
83.732	Fashion Exposition	15

NOTE: It is advisable that your application reaches UCOL at least three months prior to the programme commencement.



Work by Hannah Blackburn

## GRADUATE DIPLOMA IN FASHION / LEVEL 7

<b>STUDY OPTIONS</b>	Full time
<b>DURATION</b>	1 year
<b>INTAKES</b>	February
<b>LOCATIONS</b>	Whanganui
<b>FEES</b>	NZ\$18,755
<b>IELTS</b>	6.0 (academic equivalency will be assessed on application)

### CAREER & STUDY OUTCOMES

- designing
- styling
- manufacturing
- buying
- retailing
- marketing
- consultancy

### Fashion is all about change, trends and expression.

The demands of today's fast-paced, rapidly changing and technologically challenging fashion industry requires fashion graduates to be not only highly skilled and practiced in the art and technique of fashion, but also to be highly adaptable individuals who address challenges creatively, generate solutions and apply them in real-world situations.

### ENTRY REQUIREMENTS

A Bachelor Degree or higher from an accredited provider in a relevant field, or graduate equivalency for those who can demonstrate appropriate practical, professional or educational experience.

Those entering with a Bachelor Degree, or higher qualification, will be required to present either an original or certified copy of their academic transcript from the awarding institute. It is desirable for you to demonstrate past experience in the fashion field or a fashion qualification.

### CORE PAPERS

PAPER No.	PAPER	CREDITS
83.530	Design and Production 1	30
86.534	Design Practical	15
83.614	Production Technology	15
83.711	Final Major Project (FMP) Concept Investigation	15
83.721	Final Major Project (FMP)	30
83.732	Fashion Exposition	15
83.733	Fabric Printing	15





Work by Rena Pearson

## BACHELOR OF FINE ARTS / LEVEL 7

<b>STUDY OPTIONS</b>	Full time
<b>DURATION</b>	4 years
<b>INTAKES</b>	February
<b>LOCATIONS</b>	Whanganui
<b>FEES</b>	NZ\$17,885
<b>IELTS</b>	6.0 (academic equivalency will be assessed on application)

### CAREER & STUDY OUTCOMES

- studio art
- arts management
- museum practice
- theatre & film
- publishing
- printing
- curator
- gallery owner
- secondary & tertiary teaching
- continue on to study the Graduate Diploma in Fine Arts

### Follow in the high achieving footsteps of UCOL's Bachelor of Fine Arts alumni.

Graduates of our Quay School of the Arts exhibit in galleries throughout New Zealand, Australia and Europe. You will be introduced to the technical, conceptual and professional aspects of fine arts by our highly regarded artists and academics; complete a detailed research paper, a self-directed project and a professional public exhibition and have the exclusive opportunity to enter one of New Zealand's largest tertiary art scholarship competitions.

### HOW TO APPLY

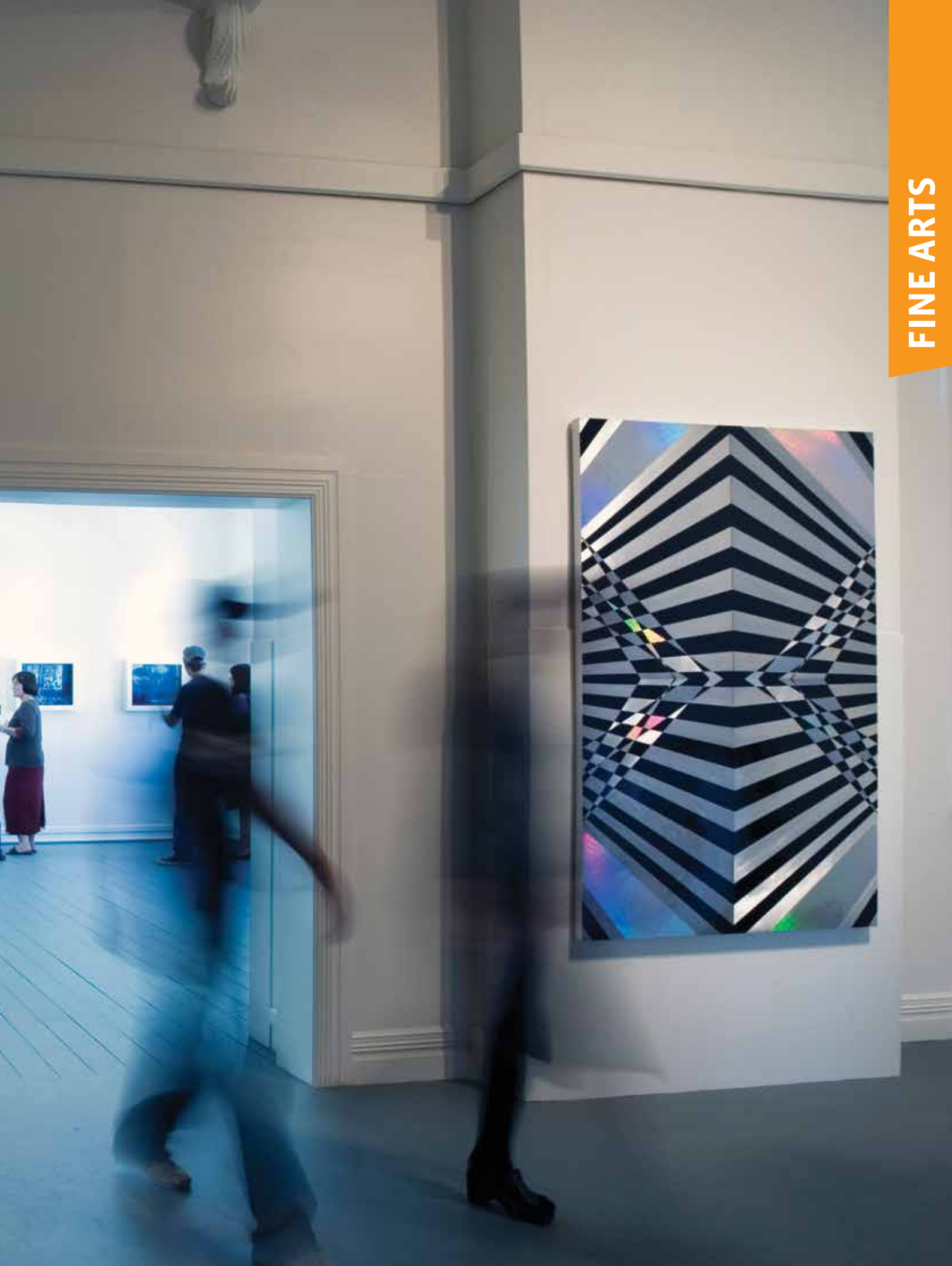
We are considering whether there will be new intakes into this programme in 2014. Please contact us at [internationalstudent@ucol.ac.nz](mailto:internationalstudent@ucol.ac.nz) if you are interested in applying.

### PORTFOLIO SPECIFICATIONS

A portfolio which demonstrates previous engagement in creative activity will be required.

Portfolios can take a number of different formats, and each will be considered on a case by case basis.

Please contact the Associate Dean (Creative) if you need further guidance with preparing or presenting a portfolio.



Work by Damian Rangiwananga (*front gallery*) & Mandy Algie (*rear gallery*)

The programme fees shown in this prospectus are for 2014 and are per annum and are listed as a guide only. Unless otherwise stated, all fees shown in this prospectus are in New Zealand dollars and include New Zealand Goods and Services Tax. Programme content shown is based on 2013 and may be subject to change.



Work by Rebekah Cheleigh

## GRADUATE DIPLOMA IN FINE ARTS / LEVEL 7

<b>STUDY OPTIONS</b>	Full time
<b>DURATION</b>	1 year
<b>INTAKES</b>	February
<b>LOCATIONS</b>	Whanganui
<b>FEES</b>	NZ\$17,885
<b>IELTS</b>	6.0 (academic equivalency will be assessed on application)

### CAREER OUTCOMES

- studio art
- arts management
- museum practice
- specialist publishing and printing
- teaching specialist fine arts subjects for qualified secondary and primary school teachers

This Graduate Diploma in Fine Arts (GDFA) will enable you to gain skills, techniques and knowledge in either glass\*, painting, printmaking, photography or sculpture and to examine theories underlying contemporary art practice.

The Graduate Diploma in Fine Arts is primarily studio based, consisting of four specialist fine arts practice papers and two theory papers. You will work intensively within your chosen specialist Fine Arts subject, culminating in a major exhibition of work and a written exposition of your art practice.

### ACADEMIC ENTRY REQUIREMENTS

A Bachelor Degree, or higher from an accredited provider in a relevant field, or graduate equivalency for those who can demonstrate appropriate practical, professional or educational experience.

Those entering with a Bachelor Degree, or higher qualification, will be required to present either an original or certified copy of their academic transcript from the awarding institute. It is desirable for you to demonstrate past experience in the fine arts field or a fine arts qualification.





Work by Erin McNamara

**CORE PAPERS\*\***

PAPER No.	PAPER	CREDITS
81.331	Critical Theory	15
81.332	Studio Art Exposition	15

**CHOOSE ONE SPECIALIST FINE ARTS SUBJECT PATH BELOW\*\***

PAPER No.	PAPER	CREDITS
GLASS		
81.210	Glass 201	15
81.211	Glass 202	15
81.310	Glass 301	30
81.311	Glass 302	30
OR PAINTING		
81.212	Painting 201	15
81.213	Painting 202	15
81.312	Painting 301	30
81.313	Painting 302	30
OR PHOTOGRAPHY		
81.214	Photography 201	15
81.215	Photography 202	15
81.314	Photography 301	30
81.315	Photography 302	30
OR PRINTMAKING		
81.216	Printmaking 201	15
81.217	Printmaking 202	15
81.316	Printmaking 301	30
81.317	Printmaking 302	30
OR SCULPTURE		
81.218	Sculpture 201	15
81.219	Sculpture 202	15
81.318	Sculpture 301	30
81.319	Sculpture 302	30

\*\* Papers subject to change.



Work by Mike Marsh





Adam Laker and Leifani Tunnage (background).



Work by Jori Quaedvlieg

## DIPLOMA IN FURNITURE MAKING & DESIGN / LEVEL 5

<b>STUDY OPTIONS</b>	Full time
<b>DURATION</b>	2 years
<b>INTAKES</b>	February
<b>LOCATIONS</b>	Palmerston North
<b>FEES</b>	NZ\$16,950
<b>IELTS</b>	6.0 (academic equivalency will be assessed on application)

### CAREER OUTCOMES

- furniture design and making
- custom made furniture making
- furniture manufacturing (large)
- furniture restoration
- furniture retailing
- design drawing
- pattern making
- stage set designing
- marine cabinet making
- joinery

**UCOL's Diploma in Furniture Design and Making will teach you all about the process of designing solid timber furniture concepts and then turning them into reality.**

This programme is unique to New Zealand and offers students a practical, hands-on experience with lecturers that are qualified furniture makers. The practical component makes up 80% of the programme. You will also undertake business studies including computing, communications and marketing to help you run your own business or work within an existing one. So explore your creativity with wood and turn to a career in fine furniture making.

### ADVICE AND GUIDANCE

- To be eligible for this award, students must also provide evidence, by the end of the first year of the programme, that they hold a recognised, current First Aid Qualification.
- The ability to work with one's hands and/or the completion of some study in the hard materials technology area would be an advantage.
- To successfully complete this programme, students need to be aware of the physical demands required for this career pathway.
- Students must supply their own equipment as specified in the Student Handbook (refer to [www.ucol.ac.nz](http://www.ucol.ac.nz)).

### YEAR 1

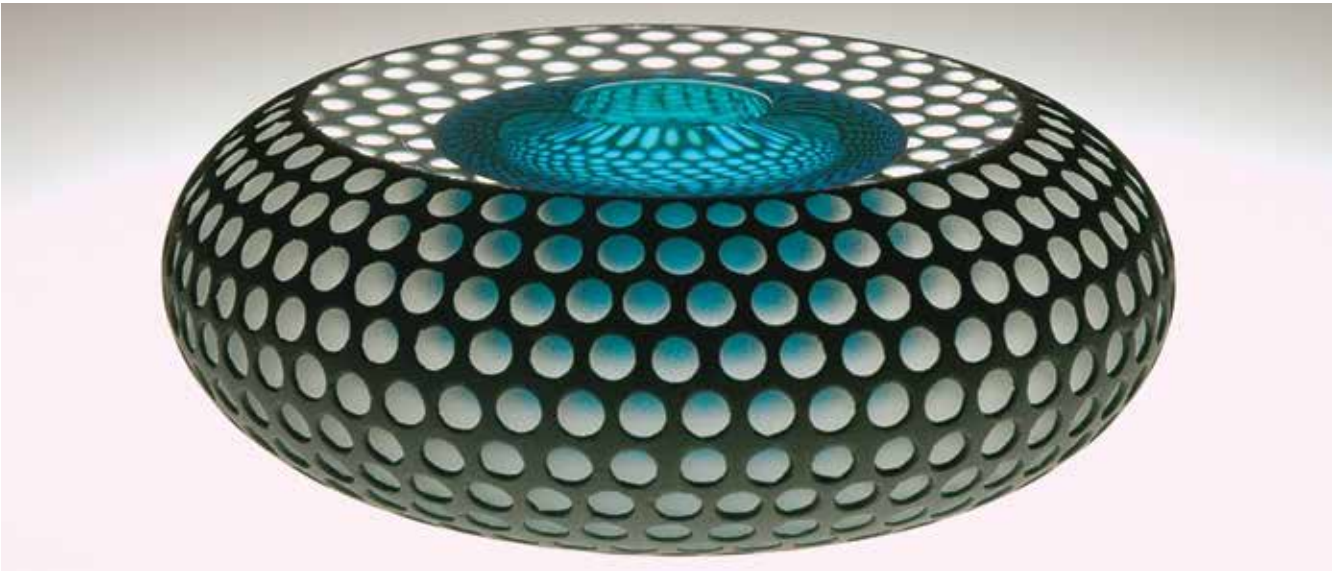
PAPER	CREDITS
Furniture Practice 1 (Includes first aid)	90
Design Drawing 1	20
Communications & Basic Business Skills	10

### YEAR 2

PAPER	CREDITS
Furniture Practice 2	85
Design Drawing 2	21
Introduction to Marketing for Small Business	7
Introduction to Small Business Management	7

Students that successfully complete all year one papers can apply for the Certificate in Furniture Design and Making, Level 3.





## DIPLOMA IN GLASS DESIGN & PRODUCTION / LEVEL 6

<b>STUDY OPTIONS</b>	Full time
<b>DURATION</b>	3 years
<b>INTAKES</b>	February
<b>LOCATIONS</b>	Whanganui
<b>FEES</b>	<b>NZ\$16,480</b>
<b>IELTS</b>	6.0 (academic equivalency will be assessed on application)

### CAREER OUTCOMES

- independent professional glass artist
- glass production technician
- assistant in established glass studio

### STUDY PATHWAYS

Diploma in Glass Design & Production Level 6\*

Certificate in Art & Design Level 4\*

 **WANGANUI GLASS SCHOOL**  
NEW ZEALAND'S GLASS SCHOOL

\* With the Wanganui District Council's support.

**Become a professional glass artist or develop your production and design skills using glass as a medium with UCOL's unique Diploma in Glass Design and Production.**

UCOL is the only tertiary institute in New Zealand that offers the internationally recognised Diploma\*. This three year Diploma, taught at the Wanganui Glass School, is an intense educational programme designed to develop your skills and technical abilities to create distinctive contemporary glass art. Glass School students enjoy a low student-to-tutor ratio, and dedicated facilities designed for hot, warm and cold glass production. Glass School graduates are successful as artists both nationally and internationally. Glass is a fascinating, alluring and seductive material – so if that's your passion, contact UCOL or visit [www.wanganuiglassschool.com](http://www.wanganuiglassschool.com)

### HOW TO APPLY

We are considering whether there will be new intakes into this programme in 2014. Please contact us at [internationalstudent@ucol.ac.nz](mailto:internationalstudent@ucol.ac.nz) if you are interested in applying.

### PORTFOLIO SPECIFICATIONS

A portfolio which demonstrates previous engagement in creative activity will be required.

Portfolios can take a number of different formats, and each will be considered on a case by case basis.

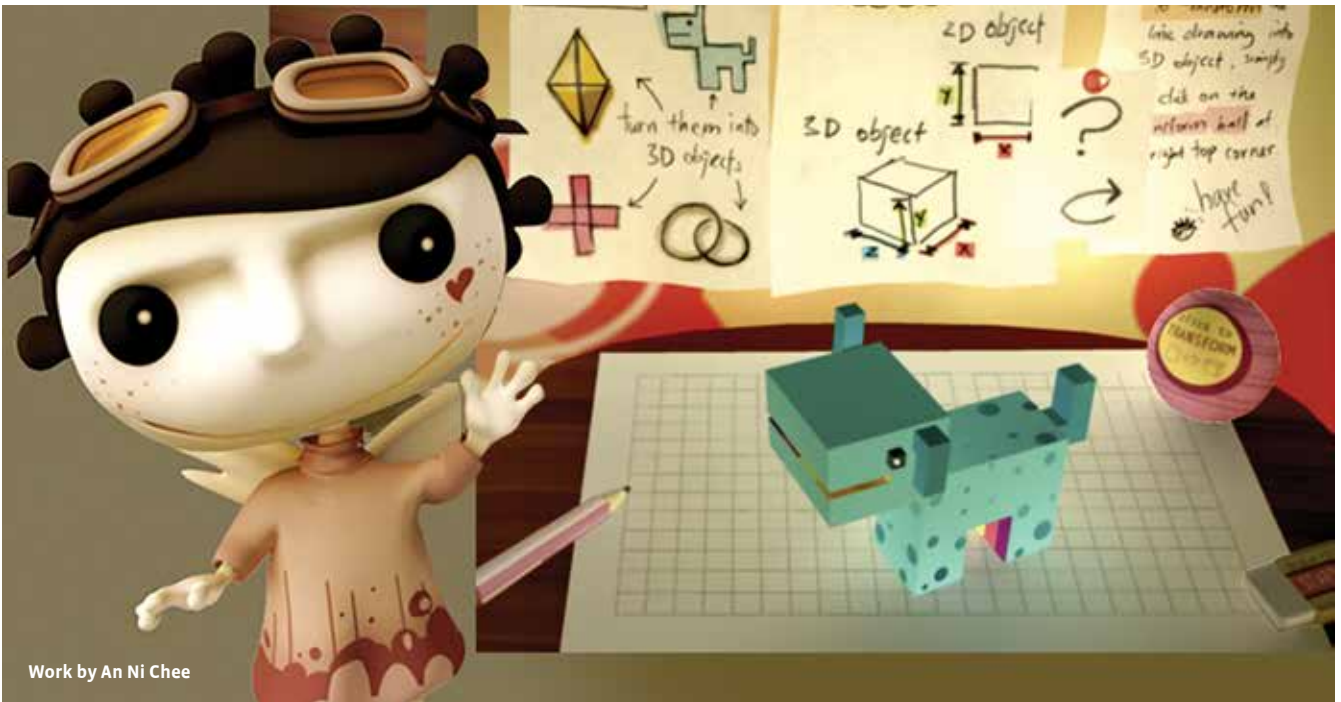
Please contact the Associate Dean (Creative) if you need further guidance with preparing or presenting a portfolio.

Note: It is advisable that your application reaches UCOL at least three months prior to the programme commencement.



Glasswork by Lewis Batchelar

The programme fees shown in this prospectus are for 2014 and are per annum and are listed as a guide only. Unless otherwise stated, all fees shown in this prospectus are in New Zealand dollars and include New Zealand Goods and Services Tax. Programme content shown is based on 2013 and may be subject to change.



Work by An Ni Chee

## BACHELOR OF COMPUTER GRAPHIC DESIGN / LEVEL 7

<b>STUDY OPTIONS</b>	Full time
<b>DURATION</b>	3 years
<b>INTAKES</b>	February
<b>LOCATIONS</b>	Whanganui
<b>FEES</b>	NZ\$18,083
<b>IELTS</b>	6.0 (academic equivalency will be assessed on application)

### CAREER & STUDY OUTCOMES

- graphic designer
- web designer
- interactive computer graphic designer
- typography
- illustrator
- software development
- advertising agency
- television computer graphics
- architectural computer graphics
- visual communication
- advertising consultant
- new product development
- printing
- packaging
- publishing
- telecommunications
- development of computer-based self-paced learning programmes
- continue on to further study in Computer Graphic Design

**Computer Graphic Design is a creative process that combines art and technology to communicate ideas.**

The Whanganui School of Design was established in Whanganui in the late 1980s and has gained an international reputation for its experimental work in new media and graphic design. The programme begins with the message that in the hands of a talented designer, communication transcends mere words. By controlling image and text, the designer creates and manages the production of information designed to inform, persuade and educate a specific audience.

### ACADEMIC ENTRY REQUIREMENTS

All applicants must meet the general admission criteria as approved by the Academic Board. You will be required to supply a portfolio of suitable work on application.

### PORTFOLIO SPECIFICATIONS

A portfolio which demonstrates previous engagement in creative activity will be required.

Portfolios can take a number of different formats, and each will be considered on a case by case basis.

Please contact the Associate Dean (Creative) if you need further guidance with preparing or presenting a portfolio.







Work by Sam Kemp

## YEAR 1 – CORE PAPERS

PAPER No.	PAPER	CREDITS
86.510	Design Fundamentals	15
86.512	Design & Art History	15
86.514	Design Practical	15
82.516	Academic Skills	15
82.511	Typography 1	15
86.513	Drawing	15
82.515	Design Practical 2	15
82.517	Colour Theory & Methods	15

## YEAR 2 – CORE PAPERS

PAPER No.	PAPER	CREDITS
82.610	Graphic Design 1	15
82.612	Typography 2	15
82.614	Graphic Design History	15
82.611	Graphic Design 2	15
86.613	Business & Marketing	15
82.617	Production Design	15
	B Elective	15
	C Elective	15

## YEAR 2 ELECTIVE PAPERS

Choose one B Elective and one C Elective paper from the following:

### B ELECTIVES

PAPER No.	PAPER	CREDITS
TRACK: PRINT-BASED		
82.615	Photography	15
82.616	Illustration	15
TRACK: TIME-BASED		
82.662	Animation	15
82.667	Video & Sound Design	15

## YEAR 2 ELECTIVE PAPERS CONTINUED

### C ELECTIVES

PAPER No.	PAPER	CREDITS
TRACK: LIBERAL ARTS		
82.686	Creative Writing	15
82.682	Media Studies	15

## YEAR 3 – CORE PAPERS

PAPER No.	PAPER	CREDITS
82.710	Graphic Design 3	15
82.712	Internship	15
82.714	Research Methods for Design	15
82.711	Graphic Design 4	15
82.713	Degree Project	30
	Elective	15
	Elective	15

## YEAR 3 ELECTIVE PAPERS

Choose two Elective papers from the following:

### B ELECTIVES

PAPER No.	PAPER	CREDITS
82.715	Photography	15
82.716	Illustration	15
82.750	Typography in Motion	15
82.754	Image, Printmaking & Bookarts	15
82.761	3D Modelling	15
82.762	Animation	15
82.765	Interactive Media/Flash	15
82.767	Video & Sound Design	15
82.768	Web Design/Action Script	15
82.770	Design Intensive	15



Work by David Thoresen



Work by Zhi Xian Goh (Ron)

## BACHELOR OF COMPUTER GRAPHIC DESIGN (HONOURS) / LEVEL 8

<b>STUDY OPTIONS</b>	Full time
<b>DURATION</b>	1 year
<b>INTAKES</b>	February
<b>LOCATIONS</b>	Whanganui
<b>FEES</b>	NZ\$18,755
<b>IELTS</b>	6.5 (academic equivalency will be assessed on application)

This fourth year is a specialised, research based programme that requires you to prepare a postgraduate thesis and develop a body of work based on this research.

The programme encourages you to use your talents and creativity to push beyond the boundaries of traditional design.

### ACADEMIC ENTRY REQUIREMENTS

All prospective students must have graduated with the conjoint Bachelor of Computer Graphic Design with an average of B+ or better for their Level 7 papers or equivalent.

### CORE PAPERS

PAPER No.	PAPER	CREDITS
82.800	Advanced Research Methods for Design	15
82.803	Concept Development Studio	15
82.855	New Media Design 1	15
82.801	Honours Project	30
82.802	Exhibition Design	15
	Elective ( <i>see below</i> )	15
Choose one of the following:		
82.856	New Media Design 2	15
	Elective ( <i>see below</i> )	15

### ELECTIVE PAPERS

PAPER No.	PAPER	CREDITS
82.815	Advanced Photography	15
82.816	Advanced Illustration	15
82.850	Advanced Typography in Motion	15
82.854	Advanced Image, Printmaking & Bookarts	15
82.863	3D Modelling	15
82.864	Advanced 3D Modelling	15
82.865	Advanced Interactive Media	15
82.868	Advanced Web Design/Action Script	15



Work by Steven Raaymakers

# POSTGRADUATE DIPLOMA OF COMPUTER GRAPHIC DESIGN / LEVEL 8

<b>STUDY OPTIONS</b>	Full time
<b>DURATION</b>	1 year
<b>INTAKES</b>	February*
<b>LOCATIONS</b>	Whanganui
<b>FEES</b>	NZ\$18,755
<b>IELTS</b>	6.5 (academic equivalency will be assessed on application)

This programme encourages independent study in an area of design that you have selected.

Self-directed research and assigned projects are used to develop an individually negotiated programme of study that will provide the opportunity to broaden your understanding of the design profession and expose you to current thinking and research methodologies.

### ACADEMIC ENTRY REQUIREMENTS

A Bachelor Degree, or higher, from an accredited provider in a relevant field is required for entry into this programme.

\* A mid-year intake may be available to applicants with relevant previous experience. Please enquire directly to the Associate Dean, Katrina Langdon.



### CORE PAPERS

PAPER No.	PAPER	CREDITS
82.800	Advanced Research Methods for Design	15
82.803	Concept Development Studio	15
82.823	Portfolio	30
Choose three B Elective papers at either Level 7 or 8		45
Choose one B Elective paper at Level 8		15

### B ELECTIVE PAPERS – LEVEL 7

PAPER No.	PAPER	CREDITS
82.715	Photography	15
82.716	Illustration	15
82.750	Typography in Motion	15
82.754	Image, Printmaking & Bookarts	15
82.761	3D Modelling	15
82.762	Animation	15
82.765	Interactive Media	15
82.767	Video & Sound Design	15
82.768	Web Design/Action Script	15
82.770	Design Intensive	15

### B ELECTIVE PAPERS – LEVEL 8

PAPER No.	PAPER	CREDITS
82.815	Advanced Photography	15
82.816	Advanced Illustration	15
82.850	Advanced Typography in Motion	15
82.854	Advanced Image, Printmaking and Bookarts	15
82.863	MAYA 1	15
82.864	MAYA 2	15
82.865	Advanced Interactive Media/Flash	15
82.868	Advanced Web Design/Action script	15





**MASTER OF COMPUTER GRAPHIC DESIGN / LEVEL 9**

<b>STUDY OPTIONS</b>	Full time
<b>DURATION</b>	1 year minimum
<b>INTAKES</b>	February
<b>LOCATIONS</b>	Whanganui
<b>FEES</b>	NZ\$18,975
<b>IELTS</b>	6.5 (academic equivalency will be assessed on application)

**This programme stresses design theory and original academic or applied research.**

Candidates for this programme are required to undertake and complete a written thesis based on their research initiatives and prepare a body of work for final exhibition. They must possess an exceptional Degree of motivation and a strong enthusiasm for design.

**ACADEMIC ENTRY REQUIREMENTS**

Honours Degree, Postgraduate Diploma or equivalent.





Work by Reks Kok

## GRADUATE DIPLOMA IN ANIMATION / LEVEL 7

<b>STUDY OPTIONS</b>	Full time
<b>DURATION</b>	1 year
<b>INTAKES</b>	February*
<b>LOCATIONS</b>	Whanganui
<b>FEES</b>	NZ\$18,083
<b>IELTS</b>	6.0 (academic equivalency will be assessed on application)

<b>CAREER OUTCOMES</b>
<ul style="list-style-type: none"> <li>• design</li> <li>• layout</li> <li>• storyboard</li> <li>• produce voiceovers</li> <li>• produce soundtracks</li> <li>• produce animated films</li> </ul>

**Learning how to use Maya is the easy part. Being creative is the hard part.**

The Graduate Diploma in Animation Level 7 at the Whanganui School of Design combines cutting edge software practice with the study of animation principles and animation processes. Our integrated, interdisciplinary approach to animation will enable you to become a well informed and skilled practitioner at the cutting edge of industry.

### ACADEMIC ENTRY REQUIREMENTS

A Bachelor Degree, or higher, from an accredited provider in a relevant field is required for entry into this programme.

### CORE PAPERS

PAPER No.	PAPER	CREDITS
86.514	Design Practical	15
82.761	3D Modelling	15
86.513	Drawing	15
82.712	Internship	15
82.520	Design Practical 2	15
82.762	Animation	15
82.713	Degree Project	30

\* A mid-year intake may be available to applicants with relevant previous experience. Please enquire directly to the Associate Dean, Katrina Langdon.



# BACHELOR OF INFORMATION & COMMUNICATIONS TECHNOLOGY (APPLIED) / LEVEL 7

<b>STUDY OPTIONS</b>	Full time
<b>DURATION</b>	3 years
<b>INTAKES</b>	March, July
<b>LOCATIONS</b>	Palmerston North
<b>FEES</b>	NZ\$16,015
<b>IELTS</b>	6.0 (academic equivalency will be assessed on application)

## CAREER OUTCOMES

A wide range of IT-related positions, such as:

- web master
- network designer
- software architect
- software contractor
- software engineer
- desktop support
- corporate trainer
- database architect
- database administrator
- game developer
- security specialist
- project manager
- business analyst
- systems analyst
- programming
- user support

**UCOL graduates with this qualification will enter the workforce ready and able to meet the demanding needs of the industry.**

An industry where it is vital that employees utilise a breadth and depth of applied knowledge in order to provide innovative and useful ICT solutions. UCOL lecturers have the industry background and the high level of skill necessary to provide this to such graduates. With a UCOL ICT Degree in your hands, your potential is amazing!

## YEAR 1 – CORE PAPERS

PAPER No.	PAPER	CREDITS
D101	Software Development	15
D111	Data Fundamentals	15
I101	Information Systems	15
I102	User Support	15
I111	Web Fundamentals	15
I121	System Analysis Fundamentals	15
T101	Network Fundamentals	15
T111	Computer Fundamentals	15

## YEAR 2 – CORE PAPERS

PAPER No.	PAPER	CREDITS
D211	Database Development	15
I202	IT Project Management	15
I221	Analysis and Design	15

## YEAR 2 – ELECTIVE PAPERS

Choose five Elective papers from the following:

PAPER No.	PAPER	CREDITS
D201	Advanced Programming	15
D202	Software Process	15
I203	Digital Multimedia	15
I211	eCommerce Systems	15
I213	Dynamic Web Solutions	15
T201	Network Services	15
T203	Networks (CCNA 1 & 2)	15
T204	Networks (CCNA 3 & 4)	15
T211	Systems Security	15

## YEAR 3 – CORE PAPERS

PAPER No.	PAPER	CREDITS
I301	Professional Practice	15
I302	Industry Project	45

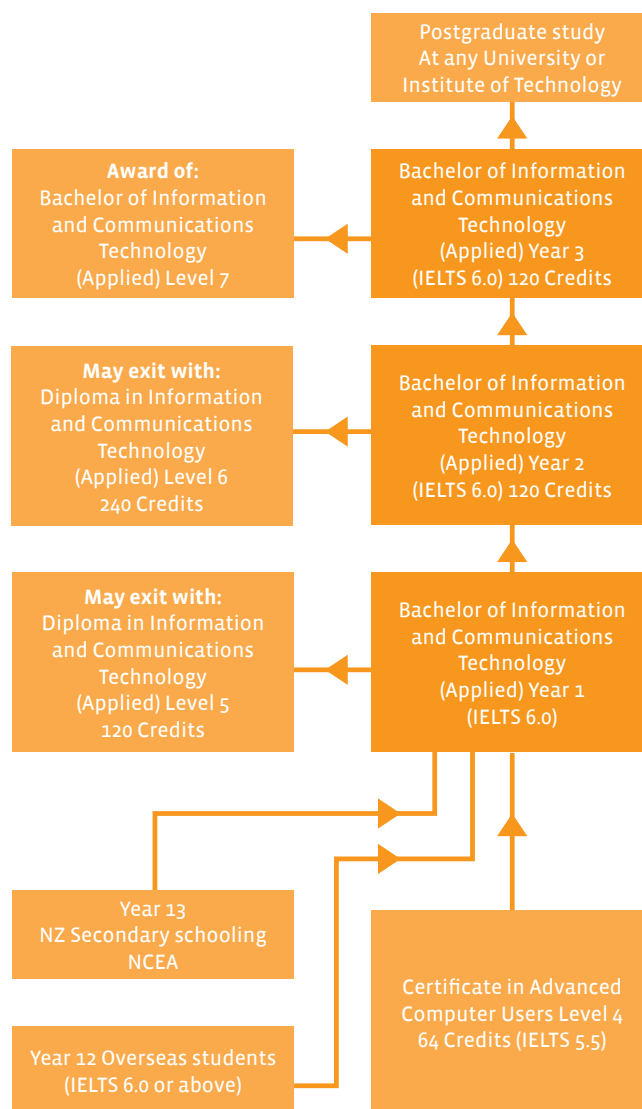
## YEAR 3 – ELECTIVE PAPERS

Choose four Elective papers from the following:

PAPER No.	PAPER	CREDITS
D301	Software Engineering	15
D303	Java Mobile and Web	15
D311	Advanced Database Concepts	15
I303	Managerial Practice	15
I321	Advanced Systems Analysis	15
I309	Special Topic	15
T301	Network Design	15
T311	Systems Administration	15



## PATHWAYS FOR COMPUTING QUALIFICATIONS





## DIPLOMA IN INFORMATION & COMMUNICATIONS TECHNOLOGY (APPLIED) / LEVEL 5 AND 6

<b>STUDY OPTIONS</b>	Full time
<b>DURATION</b>	1 year for Level 5 2 years for Level 6
<b>INTAKES</b>	March, July
<b>LOCATIONS</b>	Palmerston North
<b>FEES</b>	<b>NZ\$16,015</b>
<b>IELTS</b>	6.0 (academic equivalency will be assessed on application)

### CAREER & STUDY OUTCOMES

- web developer
- desktop support
- user support
- network technician
- applications specialist
- database administrator
- service technician
- programmer
- continue on to study the Bachelor of Information & Communications Technology (Applied)

### You'll be snapped up with UCOL's Diploma in Information & Communications Technology (Applied).

The Level 5 & 6 Diplomas are of a very practical nature, which you will gain lots of hands-on experience in our dedicated software and hardware labs. Learn skills such as C#, Dynamic HTML and networking. Graduates with this qualification will enter the workforce more than able to meet the needs of the ICT industry, or improve your career prospects even further by cross crediting your qualification to gain Year 1/2 of the Bachelor of Information and Communications Technology (Applied). If you're interested in becoming a web developer, programmer, network technician or ICT specialist, take the first step with this valuable Diploma.

### YEAR 1 – CORE PAPERS

PAPER No.	PAPER	CREDITS
D101	Software Development	15
D111	Data Fundamentals	15
I101	Information Systems	15
I102	User Support	15
I111	Web Fundamentals	15
I121	Systems Analysis Fundamentals	15
T101	Network Fundamentals	15
T111	Computer Fundamentals	15

### YEAR 2 – CORE PAPERS

PAPER No.	PAPER	CREDITS
D211	Database Development	15
I202	IT Project Management	15
I221	Analysis and Design	15

### YEAR 2 – ELECTIVE PAPERS

Choose five Elective papers from the following:

PAPER No.	PAPER	CREDITS
D201	Advanced Programming	15
D202	Software Process	15
I203	Digital Multimedia	15
I211	eCommerce Systems	15
I213	Dynamic Web Solutions	15
T201	Network Services	15
T203	Networks (CCNA 1 & 2)	15
T204	Networks (CCNA 3 & 4)	15
T211	Systems Security	15

# GRADUATE DIPLOMA IN INFORMATION & COMMUNICATIONS TECHNOLOGY (COMPUTER NETWORKS) OR (SOFTWARE DEVELOPMENT) / LEVEL 7

These one year Graduate Diplomas will enable you to gain the skills and knowledge in either Computer Networks or Software Development that are in high demand in the ICT industry.

## COMPUTER NETWORKS

<b>STUDY OPTIONS</b>	Full time
<b>DURATION</b>	1 year
<b>INTAKES</b>	March, July
<b>LOCATIONS</b>	Palmerston North
<b>FEES</b>	NZ\$16,015
<b>IELTS</b>	6.0 (academic equivalency will be assessed on application)

### CAREER OUTCOMES

- network designer or administrator
- desktop support
- security specialist

### ACADEMIC ENTRY REQUIREMENTS

A Bachelor Degree, or higher, from an accredited provider in a relevant ICT field is required for entry into this programme.

### CORE PAPERS – COMPUTER NETWORKS

PAPER No.	PAPER	CREDITS
I301	Professional Practice	15
I309	Special Topic	15
I303	Managerial Practice	15
T201	Network Services	15
T203	Cisco 1&2	15
T204	Cisco 3&4	15
T301	Network Design	15
T311	Systems Administration	15

Computer Networks requires that you complete the eight listed papers. There are no elective papers available in this choice.

## SOFTWARE DEVELOPMENT

<b>STUDY OPTIONS</b>	Full time
<b>DURATION</b>	1 year
<b>INTAKES</b>	March, July
<b>LOCATIONS</b>	Palmerston North
<b>FEES</b>	NZ\$16,015
<b>IELTS</b>	6.0 (academic equivalency will be assessed on application)

### CAREER OUTCOMES

- software architect, tester, contractor or engineer
- database architect or administrator

### ACADEMIC ENTRY REQUIREMENTS

A Bachelor Degree, or higher, from an accredited provider in a relevant ICT field is required for entry into this programme.

### CORE PAPERS – SOFTWARE DEVELOPMENT

PAPER No.	PAPER	CREDITS
I301	Professional Practice	15
I309	Special Topic	15
D201	Advanced Programming	15
D301	Software Engineering	15
D303	Java Mobile & Web	15
D311	Advanced Database	15
I202	IT Project Management	15

### CHOOSE ONE ELECTIVE PAPER FROM THE FOLLOWING (SOFTWARE DEVELOPMENT ONLY) \*

PAPER No.	PAPER	CREDITS
I211	eCommerce Systems	15
I201	Organisational Systems	15
I321	Advanced Systems Analysis	15
D202	Software Process	15
I213	Dynamic Web Solutions	15
I221	Analysis and Design	15

\* Choice of elective paper is subject to availability.

Software Development requires that you complete the seven core papers and one elective paper chosen from the six papers listed.



# GRADUATE DIPLOMA IN NURSING IN NEW ZEALAND / LEVEL 7

<b>STUDY OPTIONS</b>	Full time
<b>DURATION</b>	1 year
<b>INTAKES</b>	Various
<b>LOCATIONS</b>	Palmerston North
<b>FEES</b>	<b>NZ\$22,500</b>
<b>IELTS</b>	7.0 (in each band)
<b>OET</b>	'A' or 'B' in all bands

## Prepare yourself for work in the New Zealand health care sector as a New Zealand Registered Nurse.

Do you want to work as a New Zealand Registered Nurse? If you are already Degree qualified and your registration is recognised by your country's Nursing Council, you can apply for this one year, hands-on Graduate Diploma in Nursing in New Zealand. This ground-breaking programme aims to prepare internationally qualified nurses for nursing practice in New Zealand and registration with the Nursing Council of New Zealand (NCNZ).

You will learn how to apply the following nursing skills in a New Zealand context:

- Wellbeing
- Communication for clinical nursing
- Pathophysiology, pharmacology and genetics for nursing practice.
- Caring for patients as individuals and developing a partnership approach
- Nursing in the mental health context
- Evidence-based practice
- Professional nursing: preparing for registration and beyond
- Clinical practice

### OUTLINE

This Graduate Diploma has embedded within it the Nursing Council of New Zealand (NCNZ) approved Short Course in Competency Assessment Programme (CAP) and is specifically written for international, Degree qualified Registered Nurses. It is designed to prepare you for work in a range of health practice settings in New Zealand, such as hospitals, mental health care centres, primary health care organisations and agencies as well as Iwi based health initiatives. Successful completion of this qualification will lead to New Zealand Nursing Registration and more work opportunities as a registered nurse with no conditions on your scope of practice.

### PAPERS OFFERED TO INTERNATIONAL FULL TIME STUDENTS

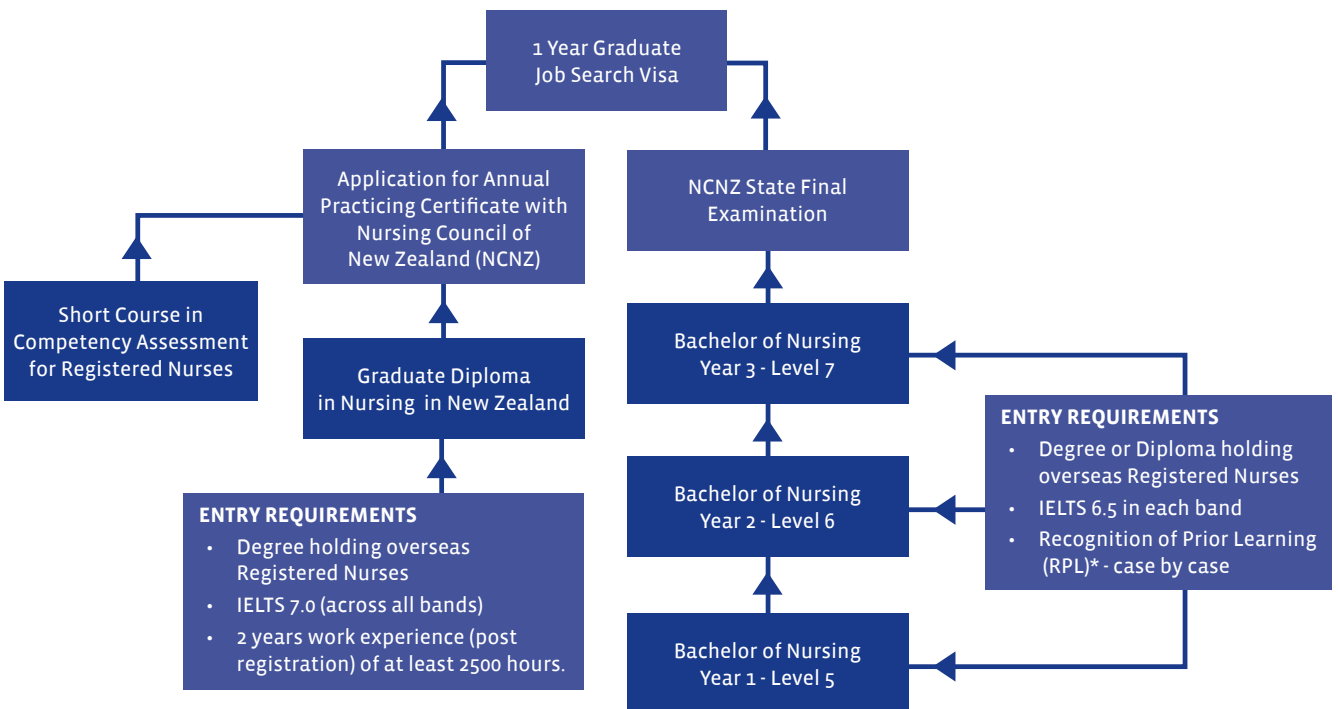
PAPER	CREDITS
Wellbeing in Aotearoa New Zealand	15
Communication for clinical nursing in Aotearoa New Zealand	15
Pathophysiology, pharmacology and genetics for nursing practice	15
Nursing in Aotearoa New Zealand: person centered care and partnership approach	15
Nursing in the Mental Health context in Aotearoa New Zealand	20
Evidence based practice	10
Professional Nursing in Aotearoa New Zealand: preparing for registration and beyond	10
Clinical practice	20

### ENTRY REQUIREMENTS

- Minimum entry requirement is an IELTS score (Academic) of 7.0 in each band; or OET 'A' or 'B' grade in all bands. IELTS must be less than two years old at the time of application and results from one sitting only, i.e. the test score must be from an individual test, not a mix of results from multiple tests.
- Successful completion of a nursing programme that is, in the NCNZ opinion, equivalent to a three year bachelor Degree programme in nursing and at a level 7 on the New Zealand Qualifications Framework.
- Evidence of two years post-registration nursing practice as a registered nurse of at least 2,500 hours within the five years immediately preceding the date of application.



**PATHWAYS TO NEW ZEALAND REGISTRATION FOR OVERSEAS REGISTERED NURSES**



\*Overseas Registered Nurses may be eligible for Recognition of their Prior Learning (RPL) towards the Bachelor of Nursing. On completion of this RPL assessment an individualised learning plan will be provided for each student.



## BACHELOR OF NURSING / LEVEL 7

<b>STUDY OPTIONS</b>	Full time
<b>DURATION</b>	3 years
<b>INTAKES</b>	February, July
<b>LOCATIONS</b>	Palmerston North
<b>FEES</b>	NZ\$17,885
<b>IELTS</b>	6.5 (in each band)
<b>OET</b>	'A' or 'B' in all bands

### It's all about you! UCOL's personal approach helps you succeed in getting your nursing career off to the best start.

It's the personal approach from our lecturers that makes all the difference and that's why UCOL nursing graduates enjoy an excellent professional reputation both here and overseas. When you enrol in UCOL's Bachelor of Nursing programme we will assign you your own Personal Tutor to guide you right through your nursing journey. They will support you through our curriculum, which includes 240 hours of clinical placements in your first year. Later in the programme these clinical experiences will include primary health care, medical and surgical and mental health settings. For over 30 years UCOL's Nurse Education Team has built a supportive and caring culture to ensure our nursing graduates pass the Nursing Council State Finals Examination with flying colours.

#### ACADEMIC ENTRY REQUIREMENTS

All applicants must meet the general admission criteria as approved by the Academic Board. In addition, all applicants are required to:

- Declare any previous criminal convictions prior to admission being confirmed; and
- Authorise UCOL to obtain a criminal record report from the relevant authority; and
- Complete a health declaration form; and
- Provide certified copies of all relevant documentation; and
- Name two referees who can provide confidential reports.

The Academic Leader, Nurse Education Team may require students to provide additional information before admission is confirmed.

Overseas Registered Nurses may be eligible for Recognition of their Prior Learning (RPL) towards the Bachelor of Nursing. On completion of this RPL assessment an individualised learning plan will be provided for each student.

#### YEAR 1 - LEVEL 5

PAPER No.	PAPER	CREDITS
BN501	The nursing context I: Society and Health	15
BN502	Professional nursing I: An introduction	15
BN503	Bioscience for health professionals I	15
BN504	Bioscience for health professionals II	15
BN505	Skills for nursing I: The fundamentals	15
BN506	Person centred care I: Communication Skills	15
BN507	Learning and teaching	15
BN508	Clinical Practice (Introduction)	15

#### YEAR 2 - LEVEL 6

PAPER No.	PAPER	CREDITS
BN601	The nursing context II: Health care systems	15
BN602	Professional nursing II: Practice Requirements	15
BN603	Nursing science and practice I	15
BN604	Nursing science and practice II	15
BN605	Skills for nursing II: Advancing practice	15
BN606	Person centred care II: The mental health context	15
BN607	Clinical Practice (medical/surgical)	15
BN608	Clinical Practice (mental health)	15

#### YEAR 3 - LEVEL 7

PAPER No.	PAPER	CREDITS
BN701	The nursing context III: Primary health care	15
BN702	Professional nursing III: Preparing for registration and beyond	15
BN703	People with acute and/or complex care needs: A partnership approach	15
BN704	People with life-long conditions: A partnership approach	15
BN705	Skills for nursing III: Evidence for practice	15
BN706	Person centred care III: The health/illness experience	10
BN707	Clinical Practice (primary health care)	15
BN708	Clinical Practice (transition)	20



# SHORT COURSE IN COMPETENCY ASSESSMENT FOR REGISTERED NURSES / LEVEL 7

<b>STUDY OPTIONS</b>	Full time
<b>DURATION</b>	Up to 12 weeks
<b>INTAKES</b>	3 - 4 per year
<b>LOCATIONS</b>	Palmerston North
<b>FEES</b>	NZ\$6,540
<b>IELTS</b>	7.0 (in each band)
<b>OET</b>	'A' or 'B' in all bands

The aim of this programme is to provide candidates with the opportunity to demonstrate competence against the Nursing Council of New Zealand (NCNZ) Competencies for Registered Nurse Scope of Practice (2007).

“Competence is the combination of skills, knowledge, attitudes, values and abilities that underpin effective performance as a nurse” (NCNZ, 2007).

This qualification allows nurses to apply for registration as nurses with the Nursing Council of New Zealand (according to their scope of practice). Applications are assessed on an individual basis and in accordance with the requirements of the Health Practitioners Competence Assurance Act 2003.

## MINIMUM ENTRY REQUIREMENTS

You must be either:

- NCNZ Registered Nurses who have been out of the nursing workforce for over five (5) years, or
- Nurses who hold a registration from another country and meet the NCNZ requirements to undertake a Competence Assessment Programme.

The following is mandated by NCNZ in respect of all Competence Assessment Programmes:

- Overseas Registered Nurses seeking entry to the programme require written notification from the Council of the requirement to complete a competence assessment programme before registration.
- Applicants requiring a competence assessment programme and who have English as a second language must:
  - Meet English language requirements laid down in the Council's registration policy for overseas Nurses prior to entry to the competence assessment programme. Specifically, applicants from a country where English is not the first or native language will need to provide evidence, obtained within the past two years from the date of assessment for registration, of their ability to speak and write in English.

- Approved English language assessments are:
  - Academic International English Language Testing System (IELTS) with a score of at least 7.0 in reading, listening, writing and speaking, respectively.
  - Occupational English Test (OET) with an 'A' or 'B' band in reading, listening, writing and speaking, respectively.

- Demonstrate their ability to communicate effectively for the purpose of practising within their scope of practice (NCNZ, 2007, p3).

The applications are accepted in this order:

1. Domestic Registered Nurses returning to nursing (they have priority as per the Education Act 1989).
2. Registered Nurses who have or are completing the 100 credit Registered Nurse to Bachelor of Nursing (RNBN) Degree at UCOL.
3. Those with maximum experience, i.e. more than three years practice as a Registered Nurse.

## ENROLMENT

To enrol for the programme you must be either:

- A Nursing Council of New Zealand Registered Nurse who has been out of the nursing workforce for over five (5) years; or
- A Nurse who holds a registration from another country and has the NCNZ endorsement to undertake a Competence Assessment Programme.
- Applicants will need to include a full up to date CV.

## CLINICAL PLACEMENTS

NCNZ Standards for Competence Assessment programmes (2005) Standard One states:

- 1.2 Appropriate clinical placements that enable the student to demonstrate all the competencies for the registered nurse or nurse assistant scopes of practice.
- 1.3 Appropriate placements are:
  - all DHBs (District Health Board).
  - non-DHB placements that have been approved by the Council and meet the standards for non-DHB clinical placement providers. These may include private surgical hospitals, aged care and primary health settings. While on your placement you will be allocated a lecturer who will be in regular contact to ensure that your clinical experience works out well and to provide you with additional support should the need arise. Please note placements may not be in Palmerston North.



Work by Brendan Marshall

# DIPLOMA IN PHOTOGRAPHIC IMAGING / LEVEL 6

<b>STUDY OPTIONS</b>	Full time
<b>DURATION</b>	2 years
<b>INTAKES</b>	February
<b>LOCATIONS</b>	Palmerston North
<b>FEES</b>	NZ\$18,755
<b>IELTS</b>	6.0 (academic equivalency will be assessed on application)

## CAREER OUTCOMES

- photographer/designer
- fashion photographer
- wedding photographer
- food photographer
- architectural photographer
- photo-journalist
- newspaper photographer
- photographic assistant

This Diploma builds on the long term success of Award winning photographic training at UCOL, which sets the benchmark for programmes in visual imaging across New Zealand.

It offers you a focus on contemporary digital-based photographic imaging. On completion you will be able to apply a range of conceptual, creative and technical skills for employment or self-employment. You leave the programme with an enthusiasm for photographic imaging and an ability to continue your own personal development in this area.

UCOL's Photography students have won New Zealand's Student Photographer of the Year for the past 8 years, while UCOL has won New Zealand's Photographic Tertiary Institute of the Year for 7 years in a row. New Zealand's Canon Student Photography Awards have been won the past 4 years in a row by UCOL Photography students. After graduating, our students have continued to enter the New Zealand Professional Photographers awards and win. Two graduates have won New Zealand's Creative Photographer of the Year and also Landscape Photographer of the year. This is New Zealand's most prestigious annual national awards. We train our students with quality and they enjoy the rewards of their efforts and skill.

## YEAR 1 – CORE PAPERS

PAPER	CREDITS
Design 1A	15
Creative Processes 1A	15
Photography 1A	15
Digital Media 1C	15
Photographic Imaging 1C	15
Photography 1B	15
Photographic Portfolio 1B	15

## YEAR 1 – ELECTIVE PAPERS

(Choose 1 of the following papers)

PAPER	CREDITS
Design 1B	15
Video 1B	15
Drawing / Illustration 1B	15

Students exiting at the end of Year 1 who have successfully achieved the required 120 credits can apply to receive the Certificate in Photographic Imaging, Level 5.

## YEAR 2 – CORE PAPERS

PAPER	CREDITS
Photography 2A	12
Business Studies 2A	15
Digital Imaging 2A	12
Image Analysis 2A – Photography	9
Major Project 2B	30
Photography 2BM	25
Image Analysis 2B – Photography	5

## YEAR 2 – ELECTIVE PAPERS

(Choose 1 of the following papers)

PAPER	CREDITS
Design 2A	12
Typography 2A	12
Drawing 2A	12
Video 2A	12
Illustration 2A	12





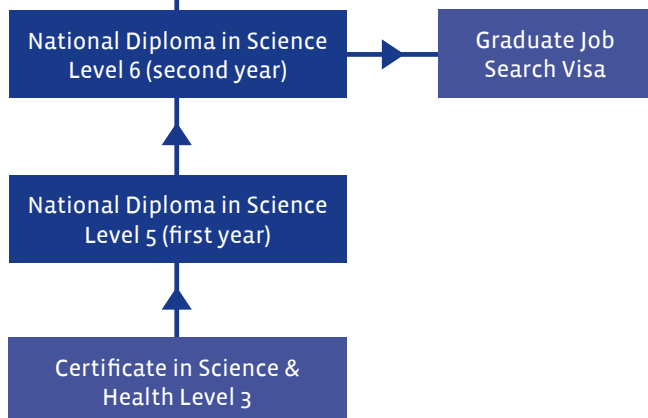
## NATIONAL DIPLOMA IN SCIENCE / LEVEL 5 AND 6

<b>STUDY OPTIONS</b>	Full time
<b>DURATION</b>	2 years
<b>INTAKES</b>	February, July
<b>LOCATIONS</b>	Palmerston North
<b>FEES</b>	NZ\$16,715
<b>IELTS</b>	6.0 (academic equivalency will be assessed on application)

### CAREER OUTCOMES

- industrial laboratory technician
- research technician
- quality assurance technician

### STUDY PATHWAYS



### UCOL Lab Technicians are in hot demand!

Become a Laboratory Technician and help keep New Zealand at the forefront of scientific research and product development and testing. UCOL offers the highly regarded National Diploma in Science in this critically short-staffed field. Once qualified, you have the opportunity to work with some of New Zealand's leading scientists in a wide range of scientific disciplines including biochemistry, chemistry, immunology, microbiology and molecular biology.

### YEAR 1 - FEBRUARY START

PAPER	CREDITS
Introduction to Microbiology	15
Techniques for Culturing and Enumerating Microorganisms	15
Aseptic Techniques and Control of Microbial Growth	15
Laboratory Data Handling and Computing	19

### YEAR 1 - JULY START

PAPER	CREDITS
Introductory Organic and Redox Chemistry	15
Laboratory Techniques	14
pH and acid-base chemistry	16
Titrimetric Analysis	15

### YEAR 2 - FEBRUARY START

PAPER	CREDITS
Environmental and Food Microbiology	15
Laboratory Quality Systems and Microbial Bioreactors.	16
Environmental and Instrumental Chemistry	15
Chromatography	14

### YEAR 2 - JULY START

PAPER	CREDITS
Protein Isolation and enzymology	15
Nucleic Acid Techniques	17
Hazards analysis and management	14
Plant Tissue culture and Pathology and Viral detection	14

### ALTERNATIVE

Students may choose to substitute the following unit standard for 30 credits from year two EITHER semester one OR semester two, subject to discussion with the Academic Leader and the availability of an industry/research placement.

PAPER	CREDITS
Industrial Placement	30



## POSTGRADUATE DIPLOMA IN CLINICAL EXERCISE PHYSIOLOGY / LEVEL 8

<b>STUDY OPTIONS</b>	Full time
<b>DURATION</b>	1 year
<b>INTAKES</b>	February, August
<b>LOCATIONS</b>	Palmerston North
<b>FEES</b>	<b>NZ\$29,520</b>
<b>IELTS</b>	6.5 overall (no less than 6.5 in speaking and not less than 6.0 in all bands)

### CAREER OUTCOMES

- cardiac rehabilitation
- muscular skeletal exercise rehabilitation
- exercise for special population groups
- health education/promotion
- physical activity educators/advisors

### Expand your knowledge of physiology and exercise for health and rehabilitation to become an expert in Clinical Exercise Physiology.

Learn this while applying your newly acquired skills working, under supervision, with real clients from every walk of life. Within this unique course, delivered within a specialist exercise and rehabilitation facility (U-Kinetics), you will focus on the key areas of cardiac rehabilitation, exercise for other special population groups (such as diabetes, respiratory, cancer and neurological conditions) and musculo-skeletal injuries. Through this Post-Graduate Diploma you will acquire over 540 hours of valuable clinical exercise

physiology experience working with clients, develop skills critical to the expert field of clinical exercise physiology, and be competent and ready to enter this new and developing field within the health industry.

### ACADEMIC ENTRY REQUIREMENTS

- Completion of the UCOL Bachelor of Exercise and Sport Science programme, or similar Degree-level programme in Exercise and Sport Science or Health Science, with a focus on physical conditioning for health, or
- Completion of a health-related Degree with industry experience in physical conditioning for health, which has been assessed by the Clinical Exercise Physiology Programme Committee as equivalent to any other entry requirements stipulated in this section.
- You must provide evidence of a minimum of 140 hours exercise delivery experience working with 'apparently healthy' or 'low risk' individuals.

Note: If you have completed a science/health-related Degree and do not meet the above criteria you may be required to complete the proposed Graduate Certificate in Exercise Science, or equivalent, prior to entry to the Postgraduate Diploma in Clinical Exercise Physiology.

### PAPER DETAILS

PAPER No.	TITLE	CREDITS
CEP 801	Clinical Exercise Physiology	30
CEP 802	Clinical Exercise Physiology Practicum	60
CEP 803	Advanced Clinical Exercise Physiology I	15
CEP 804	Advanced Clinical Exercise Physiology II	15

For more information please contact UCOL or visit the website: [www.ucol.ac.nz](http://www.ucol.ac.nz)



## BACHELOR OF EXERCISE & SPORT SCIENCE / LEVEL 7

<b>STUDY OPTIONS</b>	Full time
<b>DURATION</b>	3 years
<b>INTAKES</b>	February
<b>LOCATIONS</b>	Palmerston North
<b>FEES</b>	NZ\$17,535
<b>IELTS</b>	6.0 (academic equivalency will be assessed on application)

### CAREER & STUDY OUTCOMES

- personal trainer (REPs accredited)
- health promotion/education
- physical activity and nutrition advisors
- health coordinator
- exercise rehabilitation
- athletic trainer
- sports conditioning/trainer
- sports coordinator
- sports analysis
- teaching (following one year at teachers college)
- postgraduate study

### STUDY PATHWAYS

Bachelor of Exercise and Sport Science Level 7

Certificate in Exercise and Sport Performance Level 4

### Get in front of the pack, with UCOL's Exercise and Sports Science Degree.

With this under your belt, you will have the skills and knowledge to launch your career in sports, exercise or health. UCOL graduates understand how the body responds, adapts and recovers after exercise; the effects of diet on performance; and techniques for managing health conditions with an exercise programme. UCOL graduates also know how to test, train and motivate athletes to achieve their goals. All this knowledge can be passed on to you by our highly skilled and enthusiastic lecturers, so you too can unlock the 'science' of sport at UCOL!

### ACADEMIC ENTRY REQUIREMENTS

All applicants must meet the general admission criteria as approved by the Academic Board.

### ADVICE AND GUIDANCE

Application must be made on the Admission and Enrolment Form (International Students) prior to 1 December in the year preceding that in which you wish to commence studies.

To optimise your chance of success, applicants without evidence of Science or Mathematics achievement will be encouraged to complete the Short Course in Introduction to Human Science, Level 2. You will be counselled about the demands of the programme and the option of studying at Certificate level to develop the necessary knowledge and skills to succeed in the Degree.



**YEAR 1**

PAPER No.	PAPER	CREDITS
HP111	Anatomy & Physiology	15
HP112	Physical Conditioning 1a	15
HP113	Sociocultural Foundations of HP	15
HP114	Skill Learning & Performance	15
HP121	Exercise Physiology	15
HP122	Physical Conditioning 1b	15
HP123	Nutrition 1	15
HP124	Biomechanics of Human Movement	15

**YEAR 2**

PAPER No.	PAPER	CREDITS
HP232	Physical Conditioning 2a	15
HP233	Nutritional Biochemistry	15
HP234	Athletic Training	15
HP235	Psycho-social Aspects of Human Performance	15
HP241	Research Methods & Design 1	15
HP242	Physical Conditioning 2b	15
HP244	Nutrition for Human Performance	15
HP245	Physical Conditioning Practicum 1	15

The Diploma in Exercise Science, Level 6 can be requested at the completion of Year 2 if you have completed 240 credits of the Bachelor of Exercise and Sport Science and you do not want to complete Year 3.

**YEAR 3**

PAPER No.	PAPER	CREDITS
HP351	Research Methods & Design 2	15
HP352	Physical Conditioning 3	30
HP355	Physical Conditioning Practicum 2	15
HP362	Exercise Considerations for Special Populations	30
HP365	Physical Conditioning Practicum 3	15
HP366	Musculoskeletal Exercise Rehabilitation	15

# DIPLOMA IN VETERINARY NURSING / LEVEL 6

<b>STUDY OPTIONS</b>	Full time
<b>DURATION</b>	2 years*
<b>INTAKES</b>	January
<b>LOCATIONS</b>	Palmerston North
<b>FEES</b>	NZ\$16,950
<b>IELTS</b>	6.0 (academic equivalency will be assessed on application)

### CAREER OUTCOMES

- veterinary nurse
- animal health laboratory technicians
- assistant in cattery
- kennels
- pet shop or grooming service
- zoos
- DOC
- SPCA and welfare organisations
- Ministry of Agriculture and Fisheries
- wildlife rehabilitation
- guide dog services
- police dog services
- teaching institutes
- industry representatives

### STUDY PATHWAYS



## Come to UCOL and discover the rich rewards of working with animals.

The Diploma in Veterinary Nursing Level 6 offers you the skills and knowledge to become a qualified Veterinary Nurse with the skills to work in a veterinary clinic. The qualification focuses on dogs, cats, cattle, sheep and horses and includes small mammals and birds. Students get individualised, hands on, vet clinic based experience. Graduates are practical, work ready, flexible and industry focused. Three clinical practical papers are spent entirely in the workplace learning and working with a clinical lecturer. Our graduates have been approved to work in a BESTPractice® Accredited veterinary clinic. The programme is two years full-time. After one year of study there is an option of taking out the exit award of UCOL Certificate in Veterinary Nursing Level 5.

### ACADEMIC ENTRY REQUIREMENTS

All applicants must meet the general admission criteria as approved by the Academic Board and are required to complete a police declaration on enrolment.

It is recommended that you spend some time at a Veterinary Clinic prior to the start of the programme. A maximum of ten days such experience will be counted as part of the 25 days Clinical experience.

If you are under 20 years of age you are required to have a minimum of 15 Level 2 Credits from each of English and Biology and a total of 30 Level 2 Credits from any other two subjects or equivalent.

Acceptance into this programme is subject to students having a current police background check. This check will take place on enrolment.

All students must be physically able to handle all animals.

\* Programme duration is 2 years made up of 46 weeks in Year 1 and 41 weeks in Year 2.



**YEAR ONE - CORE PAPERS**

PAPER No.	PAPER	CREDITS
VN 112	General Biology and Animal Science	15
VN 113	Anatomy and Pathophysiology A	15
VN 114	Animal Behavioural Science	15
VN 115	Animal Care	15
VN 116	Anatomy and Pathophysiology B	15
VN 117	Animal Nursing Practice	15
VN 118	Practice Management, Legislation & Ethics	15
VN 119	Anaesthesia, Radiography & Surgical Procedures	15

**YEAR 2 - CORE PAPERS**

PAPER No.	PAPER	CREDITS
VN 213	Animal Surgical Nursing	15
VN 214	Laboratory Procedures	15
VN 215	Anaesthesia	15
VN 216	Large & exotic animal medicine & therapeutics	15
VN 217	Small animal medicine & therapeutics	15
VN 218	Animal Pharmacology	15
VN 219	Clinical Practice A	15
VN 220	Clinical Practice B	15
VN 221	Clinical Practice C	15





Work by Michael Carter

## BACHELOR OF APPLIED VISUAL IMAGING / LEVEL 7

<b>STUDY OPTIONS</b>	Full time
<b>DURATION</b>	3 years
<b>INTAKES</b>	February
<b>LOCATIONS</b>	Palmerston North
<b>FEES</b>	<b>NZ\$18,083</b>
<b>IELTS</b>	6.0 (academic equivalency will be assessed on application)

### CAREER & STUDY OUTCOMES

- graphic designer
- photographer
- web designer
- animator
- publication designer
- tv director
- packaging designer
- architectural photographer
- photographer/designer
- game designer
- fashion photographer
- interactive designer
- wedding photographer
- tv production
- food photographer
- photo journalist
- documentary maker
- illustrator
- movie animator
- film maker
- cartoon illustrator
- advertiser
- continue on to postgraduate study

### Interested in photography, graphic design, web design, animation, video or illustration?

Then explore new perspectives and create the unexpected with UCOL's visual imaging Degree. The three year Bachelor of Applied Visual Imaging will help you ignite your creativity and discover the many exciting careers open to you in visual imaging, while at the same time providing you with the necessary industry-ready skills for employment in this vast field.

This degree allows you to have a specialisation underpinned with another subject for strength (e.g. Design underpinned with Photography, Animation underpinned with Illustration), making you more employable in today's industry. Refer to the Year 2 (semester 2) elective subjects for the range of subject choices.

The programme lays a broad technical and creative foundation, allowing you to sample different areas of the industry before specialising in one of the six main areas. The programme is industry based and flexible, allowing you to fine tune your career opportunities by choosing your own mixture of subjects.

### ENTRY REQUIREMENTS

All applicants must meet the general admission criteria as approved by the Academic Board. We also require:

- A short written statement that outlines who you are and why you want to do the programme.
- An indication of your creative abilities in the form of two A4 pieces of photography, design, art (or photographs of) or electronic media such as a video or interactive file.

**YEAR 1 (SEMESTER 1 & 2) – CORE PAPERS**

PAPER	CREDITS
Design 1A	15
Photography 1A	15
Creative Processes 1A	15
Digital Media 1C	15
Contextual Studies 1C	15

**YEAR 1 (SEMESTER 2) – ELECTIVE PAPERS**

(Choose 3 of the following papers)

PAPER	CREDITS
Photography 1B	15
Design 1B	15
Drawing /Illustration 1B	15
Interactive / Web 1B	15
Animation 1B	15
Video 1B	15
Visual Journalism 1B	15

Students exiting at the end of Year 1 who have successfully achieved the required 120 credits can apply to receive the Certificate in Applied Visual Imaging, Level 5.

**YEAR 2 (SEMESTER 1) – CORE PAPERS**

PAPER	CREDITS
Visual Imaging 2A	15

**YEAR 2 (SEMESTER 1) – IMAGE ANALYSIS**

(Choose 1 of the following papers)

PAPER	CREDITS
Image Analysis 2A – Photography	9
Image Analysis 2A – Design & Illustration	9
Image Analysis 2A – Video & Animation	9

**YEAR 2 (SEMESTER 1) – ELECTIVE PAPERS**

(Choose 3 of the following papers)

PAPER	CREDITS
Photography 2A	12
Digital Imaging 2A	12
Design 2A	12
Typography 2A	12
Interactive / Web 2A	12
Drawing 2A	12
Illustration 2A	12
Animation 2A	12
Video 2A	12

**YEAR 2 (SEMESTER 2) – CORE PAPERS**

PAPER	CREDITS
Visual Imaging 2B	15

**YEAR 2 (SEMESTER 2) – IMAGE ANALYSIS**

(Choose 1 of the following papers)

PAPER	CREDITS
Image Analysis 2B – Photography	5
Image Analysis 2B – Design & Illustration	5
Image Analysis 2B – Video & Animation	5

**YEAR 2 (SEMESTER 2) – ELECTIVE PAPERS**

(Choose 2 of the following papers – 1 Secondary paper @ 15 credits and 1 Primary paper @ 25 credits)

PAPER	CREDITS
Photography 2B	15
Photography 2BM	25
Design 2B	15
Design 2BM	25
Interactive / Web 2B	15
Interactive / Web 2BM	25
Animation 2B	15
Animation 2BM	25
Video 2B	15
Video 2BM	25
Illustration 2B	15
Illustration 2BM	25

Students exiting at the end of Year 2 who have successfully achieved the required 240 credits can apply to receive a Diploma in Applied Visual Imaging, Level 6.

**YEAR 3 (SEMESTER 1 & 2) – CORE PAPERS**

PAPER	CREDITS
Business Studies 3A	15
Research and Analysis 3A	15
Business Analysis 3B	15
Visual Imaging 3B	45

**YEAR 3 (SEMESTER 1 & 2) – ELECTIVE PAPERS**

(Choose 1 of the following papers)

PAPER	CREDITS
Photography 3A	30
Design 3A	30
Interactive / Web 3A	30
Animation 3A	30
Video 3A	30
Illustration 3A	30



## LE CORDON BLEU

UCOL has partnered with Le Cordon Bleu International and WelTec to establish Le Cordon Bleu New Zealand.

Le Cordon Bleu New Zealand offers intensive training in the culinary arts for chefs and those aspiring towards a career in food and hospitality. We combine the very best of new world innovation and local cuisine with the principles, techniques and artistry of the French gastronomic tradition.

### WHY LE CORDON BLEU?

Le Cordon Bleu is considered by many to be the world's premier culinary arts institute. Students who choose to train with us will see the difference.

- A long and proud tradition of excellence.
- Knowledgeable and experienced instructors and mentors.
- A world class culinary and hospitality education.
- Career opportunities in the world's leading restaurants, hotels and resorts.
- Join a network of distinguished and famous alumni.
- Innovative, industry relevant training.

### WHY WELLINGTON, NEW ZEALAND?

New Zealand is fast attracting attention on the world's culinary map. Our reputation for award winning wine and innovative, fresh cuisine is recognised around the globe. Students of Le Cordon Bleu New Zealand can expect to experience world-class restaurants and wineries and an abundance of fresh, local produce.

Lonely Planet recently called Wellington the 'coolest little capital in the world'. There are many reasons to live and study in New Zealand's capital city. It's cosmopolitan, creative, compact, culturally diverse, vibrant, and smart. And it's New Zealand's cuisine and culture capital. With its very own annual festival of food, award-winning restaurants and reputation for exceptional coffee, we promise a world of great culinary adventures.

### BACHELOR OF CULINARY ARTS AND BUSINESS

This innovative Degree programme focuses on developing a knowledge and appreciation of fine food and wine in a 'paddock to plate' context, and how this is successfully applied in a range of business oriented culinary settings. Students will learn to conceptualise, create, promote, commercialise and manage the culinary product or service in a global context. Internationally there are few programmes that combine expertise in culinary practice with critical reflection of the culinary arts, management and business skills. The Bachelor of Culinary Arts and Business is at the cutting edge of culinary learning.

### BACHELOR OF HOSPITALITY MANAGEMENT

Fast-paced, dynamic and exciting, the hospitality industry is all about providing the ultimate experience. You will gain an understanding of the various management functions in hospitality (hotels, bars, restaurants, event management companies), and undertake industry visits, case studies and project work. In the final trimester you will complete an applied practice paper to cement your theoretical knowledge in a real work-based context and start you off on your career journey. The Bachelor of Hospitality Management is the ultimate course of study for students serious about wanting to pursue a career in hotel management or tourism.

For further information and full details on Le Cordon Bleu New Zealand, including fees information and enrolment and application forms please visit our website

[www.lecordonbleu.co.nz](http://www.lecordonbleu.co.nz)

or contact us at

**Le Cordon Bleu New Zealand**  
**Private Bag 999045**  
**Manners St Central**  
**Wellington 6142**  
**New Zealand**

Or email us

[enquiry@lecordonbleu.co.nz](mailto:enquiry@lecordonbleu.co.nz)





# LE CORDON BLEU®

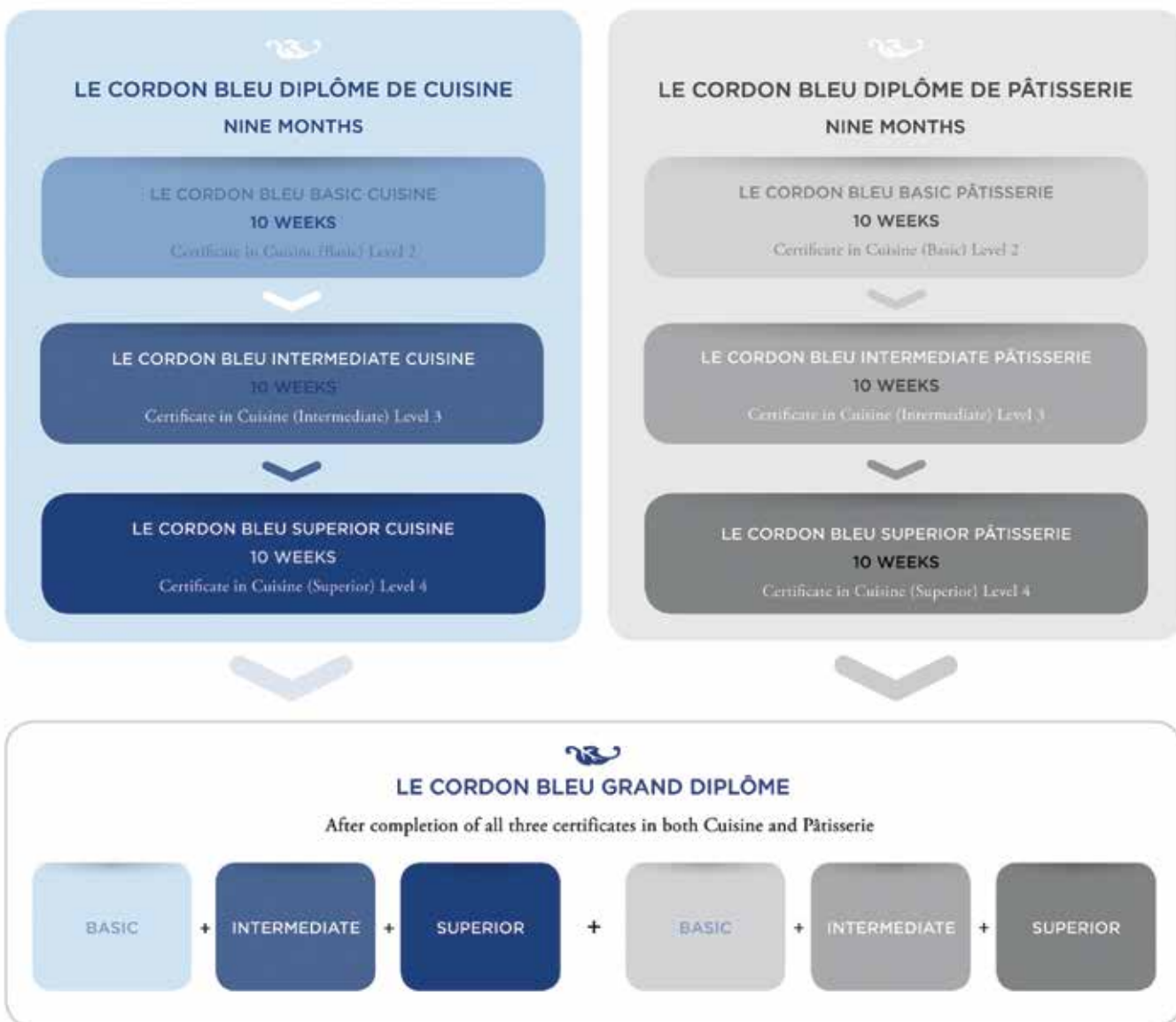
## NEW ZEALAND

### LE CORDON BLEU CLASSIC CYCLE PROGRAMMES

Our Le Cordon Bleu chefs teach sophisticated traditional culinary techniques that form the foundation of gastronomy and also guide the newest trends.

Le Cordon Bleu Classic Cycle Programme teaches students to progressively discover and master the basics of French Cuisine or Pâtisserie. Over a period of nine months students advance through Basic, Intermediate and Superior levels in either Cuisine or Pâtisserie.

Each day begins with two hours of demonstration, followed by four hours of practical work. Workplace-related topics will be delivered in one to two hour teaching sessions. Theory is integrated throughout the programme.



**Important Note:** Students who intend to complete only some of the certificate courses, for example at Basic level only, should only enrol in the relevant individual certificates at Basic, Intermediate or Superior levels. International students who wish to complete all three levels should enrol in Le Cordon Bleu Diplôme de Cuisine and/or Le Cordon Bleu Diplôme de Pâtisserie, as this will enable them to obtain one student visa for the full length of their study program.



## ENGLISH LANGUAGE

English Teaching College (ETC) have been preparing students for academic studies, and employment since 1993, from our premises in Palmerston North and Wellington.

The current roll is 170 full-time students from 25 different countries. We offer the following programmes for international students:

### **CERTIFICATE IN ENGLISH LANGUAGE COMPETENCE (ACADEMIC)**

This programme has four different levels from pre-intermediate to advanced, and develops writing, reading, speaking and listening skills for tertiary study. Students who study in this programme can prepare for the IELTS exams. International students can enrol for 4 to 96 weeks.

### **CERTIFICATE IN ENGLISH LANGUAGE COMPETENCE (GENERAL)**

This very popular programme prepares you for reading, speaking, listening, and writing in an English-speaking world. Students who complete this programme can advance to the academic English programme. International students can enrol for 4 to 96 weeks.

### **CERTIFICATE IN ENGLISH FOR HEALTH PROFESSIONALS (12 WEEKS OR 24 WEEKS)**

This full time programme is designed for medical professionals (especially nurses), who want to improve their English before taking the OET or IELTS exam. Students study academic IELTS from 9am to 3pm and then receive OET classes 3 hours per week.

### **TOEIC TESTING**

We are an approved centre for teaching and testing TOEIC.

### **OET OCCUPATIONAL ENGLISH TEST**

The OET English test is accepted by the Nursing Council of New Zealand, and by other professional organisations like the Dental Registration Board. Palmerston North is a registered examination centre.

### **CAMBRIDGE ENGLISH (FIRST CERTIFICATE IN ENGLISH)**

We have tutors who will help students gain this qualification.

### **PRIVATE ENGLISH CLASSES**

Customised to your requirements, the classes include only one or two students.

### **PROGRAMME STARTING TIMES & HOURS**

- You can start any Monday in the year
- You can select the number of weeks for your study
- Study hours 9am to 3pm Monday to Friday
- We include school activities in the school fees

### **ETC QUALITY**

ETC is registered with the New Zealand Government and accredited by the New Zealand Qualifications Authority, (NZQA).



### **INTERNATIONAL CONTACTS**

Email: [office@etc.ac.nz](mailto:office@etc.ac.nz)  
 Website: <http://www.etc.ac.nz>  
 Phone: +64 6 357 7107  
 Fax: +64 6 358 0800

### **PALMERSTON NORTH CAMPUS**

14 Broadway Avenue  
 P.O. Box 995  
 Palmerston North  
 New Zealand



## IELTS PRE-TESTING CENTRE

We are an approved centre for IELTS pre-testing.

## STUDENT SUPPORT

- We will arrange your accommodation
- We will meet you at the airport
- We arrange visas and bank accounts
- Academic counselling
- Assistance in joining sports and cultural clubs.

## COSTS

Enrolment fee NZ\$150

Accommodation arrangement fee NZ\$210

Homestay (Palmerston North) NZ\$231 per week.

## PROGRAMME FEES

Full-time: NZ\$380 for 25 hours per week

Part-time: NZ\$260 for 15 hours per week

Certificate in English Language Competence + OET Training:  
NZ\$6,360 for 12 weeks

Private English Classes: NZ\$65 per hour

## ACCOMMODATION

We can arrange your homestay accommodation. You will have your own room, staying in a family home with three meals a day.

## ETC STUDENT STORY



**Name:** Yuka Yamaguchi

**Nationality:** Japanese

**Enrolled in:** Certificate in English Language Competence

Hi, my name is Yuka Yamaguchi. My dream is to be a Registered Nurse in New Zealand.

I started studying academic English at ETC after receiving an overall score of 6 in IELTS; I decided to study at UCOL for the Bachelor of Nursing. I have now gained a 7 in IELTS each band.

I would like to take this opportunity to say thank you to all the staff at ETC, particularly Marie who devoted many hours to correcting my sentence structure and to John and Shiho who gave me good advice and support.

I am very happy to recommend ETC to serious students who want to improve their academic English.

I am now going to apply to the Nursing Council of New Zealand for registration, and hope to start working as a Nurse next year.

**Update:** Yuka successfully completed her nursing study at UCOL and is now working as a Haemodialysis Nurse in the Renal Unit at the Palmerston North Hospital.





# OTHER PROGRAMMES OFFERED BY UCOL

## BUSINESS & ADMINISTRATION

### CERTIFICATE IN BUSINESS STUDIES / LEVEL 4

Gain the fundamentals to understand business and the confidence to use your management supervision skills.

Length: 1 year                      Fees: NZ\$14,610  
Location: PN, WG                IELTS: 5.5  
Intakes: February & July

### NATIONAL CERTIFICATE IN BUSINESS ADMINISTRATION & COMPUTING / LEVEL 3

This nationally recognised qualification will equip you with a broad range of business skills with an emphasis on computing, text processing, reception and workplace communication.

Length: 1 semester                Fees: NZ\$7,850  
Location: PN, WG, MAS        IELTS: 5.5  
Intakes: February & July (PN), July (WG), February (MAS)

## INFORMATION SYSTEMS & COMPUTING

### CERTIFICATE FOR ADVANCED COMPUTER USERS / LEVEL 4

Advance your skills in a variety of business computing software applications and learn advanced techniques in subjects such as computer programming where you'll write code using vb.net. You'll also create relational databases using MS Access, become multimedia savvy with web creation using Dreamweaver, Flash and Mediator, and advance your business application skills using MS Word, Excel and MYOB.

Length: 1 semester                Fees: NZ\$7,635  
Location: PN                        IELTS: 5.5  
Intakes: February & July

### CERTIFICATE IN INFORMATION TECHNOLOGY FOR BUSINESS / LEVEL 3

This programme will teach you software applications including spreadsheets, word processing, databases, desktop publishing, web design, MYOB, email and internet. On the hardware side you will be able to identify components and understand the technology of computing.

Length: 1 semester                Fees: NZ\$7,650  
Location: PN                        IELTS: 5.5  
Intakes: February & July

## HEALTH & SCIENCE

### CERTIFICATE IN SCIENCE & HEALTH / LEVEL 3

This programme will help you get ready for a career in health or science if you've been away from study or you didn't take biology, chemistry or physics at school. When you graduate from this programme you'll have a firm foundation to go on to study in nursing, vet nursing, sport science and science.

Length: 1 year                      Fees: NZ\$16,715  
Location: PN, WG                IELTS: 5.5  
Intakes: February

## SPORT & FITNESS

### CERTIFICATE IN EXERCISE AND SPORT PERFORMANCE / LEVEL 4

While studying this Certificate you'll be introduced to the effects of exercise on the body and how to write a training programme, along with aspects of sport coaching, the fitness industry, event management and the application of sport medicine and injury management. Students who are successful in this programme meet the entry criteria for the Bachelor of Exercise and Sport Science.

Length: 1 year                      Fees: NZ\$15,265  
Location: PN, WG, MAS        IELTS: 5.5  
Intakes: February

## TECHNOLOGY, TRADES & INDUSTRY

### DIPLOMA IN CONSTRUCTION / LEVEL 5

If you are interested in the planning or management of building projects from start to finish, this diploma is for you. You'll learn hands on skills such as site selection, building law, material selection, design and environmental impact so you'll be well equipped to handle small to medium building projects. Start with the Diploma in Construction at UCOL and you could go on to be a construction manager, quantity surveyor or architectural technician

Length: 1 year                      Fees: NZ\$16,715  
Location: PN                        IELTS: 6.0  
Intakes: March & July

### CERTIFICATE IN CARPENTRY / LEVEL 4

If you are interested in building, labouring, carpentry or construction work, this qualification aims to help you gain employment in the construction industry.

Length: 1 year                      Fees: NZ\$18,775  
Location: PN, MAS                IELTS: 5.5  
Intakes: February & July (PN); February (MAS)

## FASHION & BEAUTY

### DIPLOMA IN BEAUTY THERAPY / LEVEL 5

This Diploma will give you the most up to date theoretical and practical Beauty Therapy techniques and will optimise your opportunities for getting ahead within the vibrant beauty industry. Use the latest equipment and techniques which will take your training to the next level.

Length: 1 year                      Fees: NZ\$15,700  
Location: PN, WG, MAS        IELTS: 6.0  
Intakes: February

### CERTIFICATE IN BEAUTY SERVICES / LEVEL 4

This Certificate focuses on beauty services. Here you will get the practical and theoretical knowledge to perform a manicure and pedicure, nail augmentation, waxing, makeup application and facial therapies. You will get to work with clients in a fully equipped and spacious beauty clinic.

Length: 1 year                      Fees: NZ\$16,755  
Location: PN, WG, MAS        IELTS: 5.5  
Intakes: February

#### **CERTIFICATE IN FASHION / LEVEL 4**

Get the opportunity to develop technical skills in sewing, pattern making and design to industry standards with a focus on the design of different garments that are then made into patterns and constructed into a final outfit.

Length: 1 year                      Fees: NZ\$15,265  
Location: WG                      IELTS: 5.5  
Intakes: February

#### **PHOTOGRAPHY, ARTS & DESIGN**

##### **DIPLOMA IN INTERIOR DESIGN / LEVEL 5**

Gain a comprehensive foundation in all aspects of residential interior design, studying colour, history of interior design, furnishings, drafting, CAD, design theory, ergonomics, furniture design, kitchen and bathroom design, building technology, materials, finishes and lighting. You'll also learn about what's involved in a professional design practice.

Length: 1 year                      Fees: \$18,585  
Location: PN                      IELTS: 6.0  
Intakes: February & July

#### **CERTIFICATE IN ART AND DESIGN / LEVEL 4**

This Certificate allows you to experience printmaking, painting, drawing, computer graphic design, sculpture, fashion design and art history, with the possibility of photography and glass depending on availability.

Length: 1 year                      Fees: NZ\$15,265  
Location: WG, PN                      IELTS: 5.5  
Intakes: February & July

##### **DIPLOMA IN PERFORMING ARTS / LEVEL 5**

This exciting Diploma allows you to develop your skills and confidence in acting, voice, singing and dancing. The programme is very practical, so you will be constantly putting new skills to use under the guidance of professional tutors.

Length: 1 year                      Fees: NZ\$18,585  
Location: PN                      IELTS: 6.0  
Intakes: February

## **INTERNATIONAL STUDENT SUPPORT & SERVICES**

**We have many free services available to support you while studying at UCOL. We focus on giving you an unforgettable learning and social experience.**

#### **SETTLING IN**

Our International Centre staff will help you with useful information about preparing to study in New Zealand and by arranging your accommodation even before you arrive. You will be met at the airport closest to your campus, taken to your accommodation, and given assistance in arranging a bank account. There is a lot to learn and we aim to make the first few weeks at UCOL as easy as possible for you. At a special orientation session you will learn how we look after our students and about New Zealand culture. We offer financial advice, counselling for stress, health or study.

#### **LEARNING SERVICES**

The Learning Services Team are available to assist you with coursework and study, at all levels. Support is offered in a wide variety of areas, on a 'one-on-one' or 'small group' basis, and tailored to meet individual needs. Focus is placed on teaching strategies and skills, necessary for personal improvement, success and independence.

#### **LEARNING HUBS**

There are Learning Hubs located at all three campuses. The main desk within the Learning Hub is where you can go for all your questions and first port of call queries. The Student Experience Team (SET) are there to support you during your study with UCOL and respond to any enquiries you may have.

#### **LIBRARY**

The Library contains a comprehensive array of resources to support your study. The Library staff are committed to helping you use these resources so you can develop the research and study skills you need.

#### **STUDENT COACH (PN ONLY)**

UCOL's Student Experience Coach is available to support you when personal, social or practical issues are getting in the way of you being able to study effectively.

#### **STUDENT RESOURCE CENTRE (PN ONLY)**

A national award winning student resource centre provides you with all of those miscellaneous items you will need from your ID card, collecting assignments to parking stickers plus many other helpful services.

#### **HEALTH CENTRE**

UCOL's Health Centre offers help with most of your health needs, including free nurse services.

#### **COUNSELLORS**

A confidential service to help with any issues that may affect you, either with your study or in your personal life.

#### **CHILDCARE**

Available on all campuses to allow you to concentrate on study. These centres are very popular so booking in early is essential.

#### **TRANSPORT**

A free bus service exists for UCOL students for local trips within Palmerston North and Whanganui. Students must show current UCOL Student Identification to be granted a free ride. If students decide to ride a bicycle please remember a cycle helmet, as it is compulsory to wear a cycle helmet in New Zealand.

There is an excellent national public transport system in place which includes buses, ferries and trains. If you are planning a tour throughout New Zealand, you can obtain special student travel passes. Discount fares are also available for plane travel if you book early.



### AS@U

UCOL's Student Association is run by students. They provide advocacy services, representation for students and other services which help you out, as well as holding student events like orientation.

### INTERNATIONAL STUDENT SUPPORT COORDINATORS

Offering support to international students in collaboration with other student support services and assistance with adjusting to life and study in New Zealand.

### ACCESSIBILITY/DISABILITY COORDINATOR

Helping students to overcome barriers to their learning. Assistance with physical, mental or learning disabilities is available by contacting the Coordinator in your region.

### CHAPLAINCY

Available to support all students and staff, regardless of race, gender or religious background. Chaplains do this by providing a listening ear, encouragement and support – including prayer support.

**Please note:** Not all services may be available on all campuses. Please contact UCOL for further information on what services are available at your campus.

### CAN YOU DRIVE IN NEW ZEALAND?

You can drive in New Zealand if you hold a driver licence from another country or an international driving permit and:

- your overseas licence is current and valid, and
- you've not received a disqualification or suspension in New Zealand, and
- you last entered New Zealand less than 12 months ago, and
- your overseas licence is in English; if it's not, you must have an accurate translation, and
- you've not been granted a New Zealand driver licence.

If your licence or international driving permit doesn't meet these requirements, you must apply for a New Zealand driver licence to drive in New Zealand.

### HERE FOR A YEAR OR MORE?

If you'll be in New Zealand for more than a year, you need to gain a New Zealand driver licence. If your overseas licence is still current or expired less than 12 months ago you can apply to convert it to a New Zealand licence.

You can get more information on how to apply for a New Zealand Drivers Licence from the Land Transport website [www.nzta.govt.nz](http://www.nzta.govt.nz).

### CODE

UCOL has agreed to observe and be bound by the Code of Practice for the Pastoral Care of International Students published by the Ministry of Education. Copies of the Code are available on request from UCOL or from the New Zealand Ministry of Education website at: [www.minedu.govt.nz/goto/international](http://www.minedu.govt.nz/goto/international).

### IMMIGRATION

Full details of Visa and permit requirements, advice on rights to employment in New Zealand while studying, and reporting requirements are available through the New Zealand Immigration Service, and can be viewed on their website at: [www.immigration.govt.nz](http://www.immigration.govt.nz).

### ELIGIBILITY FOR HEALTH SERVICES

Most international students are not entitled to publicly funded health services while in New Zealand. If you receive medical treatment during your visit, you may be liable for the full costs of that treatment. Full details on entitlements to publicly-funded health services are available through the Ministry of Health, and can be viewed on their website at: [www.health.govt.nz](http://www.health.govt.nz).

### ACCIDENT INSURANCE

The Accident Compensation Corporation (ACC) provides accident insurance for all New Zealand citizens, residents and temporary visitors to New Zealand, but you may still be liable for all other medical and related costs. Further information can be viewed on the ACC website at: [www.acc.co.nz](http://www.acc.co.nz).





The Learning Hub, Palmerston North Campus

## MEDICAL AND TRAVEL INSURANCE

International students must have appropriate and current medical and travel insurance while studying in New Zealand. This is because most students are not entitled to publicly funded health services while in New Zealand unless they are:

- A resident or citizen of Australia, or
- A national of the United Kingdom in New Zealand, or
- The holder of a temporary permit that is valid for two years or more.

If you do not belong to one of these special categories and you receive medical treatment during your visit, you must pay for the full costs of that treatment. There is a \$25 charge for a clinic visit on our campuses. If you need assistance after hours, you can visit a local emergency clinic or hospital. Medical insurance must cover the cost of staying in hospital, visits to the doctor, urgent medical treatments and emergency dental treatment. It is compulsory for all international students to have appropriate medical and travel insurance cover before they leave their home country. UCOL will purchase medical and travel insurance on your behalf unless you can show proof that you have arranged your own insurance cover. The cost of insurance cover arranged by UCOL is shown on your offer of place.

## EMPLOYMENT IN NEW ZEALAND

You may be allowed to work in New Zealand if you are enrolled in a full-time long-term programme of study. You need to obtain a work permit from NZ Immigration Services for any work in New Zealand. Please visit the NZ Immigration Service website for more information: [www.immigration.govt.nz](http://www.immigration.govt.nz).

To find out what is and is not allowed while working in New Zealand visit [www.nzstudywork.com](http://www.nzstudywork.com). The website has been especially developed by Immigration New Zealand and provides a 'one-stop-shop' for information on employment rights and responsibilities, health and safety in the workplace, work conditions attached to student visas and settlement resources.

## COST OF LIVING

Please note: This is a general guide only and prices may vary depending on the goods and services sought.

### ACCOMMODATION

#### PALMERSTON NORTH

There are a number of options for students wanting external student accommodation:

Baxters on Ranfurly	\$150-\$200 per week
Palmy 31	\$150-\$200 per week

Baptist Youth Hostel	\$7000 per year
@ The Hub	\$215-\$385+ per week
Peppertree Hostel	\$140 per week
11 Ruahine	\$195-\$220 per week

Please note: These types of accommodation may require a bond and other moving in costs.

### WHANGANUI

#### WHANGANUI STUDENT FLATS

Whanganui has a limited number of student flats available. Accommodation in the flats costs approximately NZ\$120 - NZ\$130 per week. This covers all the bills except telephone, bedding and food. Each room comes with a bed, wardrobe, study desk, chair and a bedside cabinet. The student flats are situated 15 to 20 minutes walk from the main campus and are on the local bus route. Contact Property Brokers in Whanganui: +646 345 7714

### MASTERTON

Masterton has short term accommodation available at Chanel Court Motel for approx: \$145 per week.

### OTHER GENERAL OPTIONS THAT ARE AVAILABLE THROUGHOUT NEW ZEALAND ARE:

#### HOMESTAY

Homestay accommodation is where a student lives with a carefully selected New Zealand family. The average cost of homestay accommodation in Palmerston North, Masterton or Whanganui is between NZ\$180.00-\$210.00 per week. This is much cheaper than in bigger cities.

UCOL can arrange this type of accommodation for you before you leave your own country. Many students choose homestay accommodation for the first three or four months of their stay in New Zealand and then go on to share a flat with friends.

In a homestay you will be provided with your own room and at least two meals a day. Homestay allows you to concentrate on your studies and is also a great way for you to learn as much as possible about New Zealanders and the way we live. It provides you with an opportunity to practice your English and get used to life in New Zealand while you have the support of a friendly and caring New Zealand family.

### PRIVATE RENTAL ACCOMMODATION

#### FLATTING

In New Zealand the word flattening means that you wish to rent a house and share it with friends. You will be responsible for providing your own furniture, your share of power/gas/phone bills, cooking your own meals, doing your own laundry and the rental agreement. You will also

need to make sure that you allow enough money for buying furniture, bedding, cooking utensils and other household items.

You will be required to pay a Flat Bond which is usually 2 weeks rental, plus 2 weeks rental paid in advance. The bond is held by the Department of Building and Housing. When you vacate your flat, provided it is in the same condition as when you entered it, you can apply to have your bond refunded. It can take some time to find a flat and you may need to stay in temporary accommodation for the first 2-4 weeks.

### TEMPORARY ACCOMMODATION

Finding a suitable place to rent can take 2-4 weeks. We can arrange short term homestay accommodation for you for this time. It can be less expensive to do this than to stay in a motel or backpackers as you will have at least two meals a day provided for you at no extra cost. You can find more information about temporary accommodation on the following websites:

www.manawatunz.co.nz  
 www.aatravel.co.nz  
 www.bbh.co.nz  
 www.yha.co.nz.

### FOOD

- A complete range of fresh meats, poultry and fish is available in New Zealand.
- Fresh fruit and vegetables are plentiful, and are moderately priced.
- Ethnic foodstuffs are available as well as a variety of ethnic restaurants and other food outlets catering to a variety of cuisine.

### CLOTHING

- Good woollen jerseys and waterproof jackets are relatively inexpensive in New Zealand.
- Cotton clothing is more expensive in New Zealand than in Asia.
- Shoes are expensive in New Zealand compared with footwear in Asian countries.
- Good leather shoes with rubber soles and sports shoes are necessary for New Zealand.
- Bring an umbrella and a raincoat.

### MONEY

- Bring only a little cash.
- Bring travellers cheques to cover your initial expenses.
- Take out a bank draft for larger sums of money.

It is illegal to possess recreational drugs (Class A, B or C) or prescribed drugs without a prescription in New Zealand. Do not bring any drugs with you unless they are prescribed by a doctor.

You may not work for money in New Zealand without a Special Student Work Permit. People who breach this regulation can be sent home immediately.



### LEGAL RIGHTS

Police in New Zealand do not routinely carry guns, and are friendly and helpful. Anyone who is arrested will be permitted to speak to a lawyer. If you want to know more about your legal rights in New Zealand make sure to ask at your Orientation.

### APPROXIMATE COSTS IN NZ\$ FOR VARIOUS ITEMS (PER PERSON)

Hair cut	\$15 - \$55
McDonald's Combo Meal	\$10
Take-out Pizza	\$7 - \$20
Coffee	\$3 - \$5
Cola drink	\$1.50 - \$4
Light lunch	\$5 - \$15
Restaurant meal	\$14 - \$40
Milk per litre	\$3 - \$4
Movie tickets	\$10 - \$15
Short bus ride	Free with Student ID
Taxi/km ride	\$3 - \$5
Pair of Levi jeans	\$160
Woollen sweater	\$40 - \$120
T-Shirt	\$20 - \$100
A round of golf	\$10 - \$25
Shampoo	\$5 - \$25
Toothpaste	\$2 - \$9
Gas/Petrol per litre	\$1.80 - \$2.10
Visit to doctor	\$45 - \$120
Medicine	\$5 - \$30
Gym membership (6 months)	\$380
Visit to dentist	\$75 - \$300
Insurance: travel, health, personal per semester	\$310
Power per month	\$100 - \$250
Gas per month	\$60 - \$80
Phone per month	\$50 plus extra for toll calls

# ADDITIONAL HELP

## HELPFUL TIPS

- Bring your International Student Card (ISIC) with you, it is cheaper than obtaining one in New Zealand — you can purchase discounted plane fares with an ISIC card. For more information about the ISIC card go to [www.isiccard.co.nz](http://www.isiccard.co.nz)
- If you have a Driver's Licence, bring it with you — this makes it easier to obtain a New Zealand Licence.
- Bring half a dozen passport size photos with you — they are expensive in New Zealand.
- Don't bring electrical goods (hair dryer, CD player etc.); even with the proper adapter, they may blow out. There are various electrical appliance stores in Whanganui, Masterton and Palmerston North where you can buy small electrical goods at reasonable rates.
- Bring your own sports gear, e.g. squash racquet, badminton racquet, etc. These will probably cost more in New Zealand. The exception is good quality hockey sticks, which are cheap in New Zealand.
- Make a written request in advance for a book list. Books may be cheaper in your own country.
- Make sure you have information about your own country. People will ask you a lot of questions.
- Cigarettes are expensive in New Zealand. It is also illegal to smoke in public areas like restaurants and bars, also all homestays will not allow smoking in their homes. Give up before you arrive!
- Remember, 20kg is all the luggage you can bring to New Zealand without paying an excess baggage fee.
- Bring your national costume if you consider this appropriate.

## THINGS YOU SHOULD KNOW BEFORE YOU LEAVE HOME

- Basic cooking (how to cook rice, prepare dinner etc.)
- Basic first aid (how to clean wounds, perform CPR etc.)
- How to take care of your own clothes and bedding.

## RECOGNITION OF PRIOR LEARNING (RPL)

If you already have an international qualification, previous work experience or other tertiary qualifications, you may be granted credit exemptions and may complete your Degree in a shorter time. We will be happy to discuss options with you as you make this important first decision.

## APPLYING FOR STUDY

Achieving your goal begins with selecting the right programme of study. UCOL's programmes are outlined in this prospectus or you can email our International Office at any time if you need advice, even before applying for admission.

When you are enrolled, one of our Personal Education Planner (PEP) advisors will meet with you to discuss how you are progressing towards your goals; how you are coping with study; how you are finding being part of the learning environment at UCOL; and how to get some help if you need it.

## WORKING TOWARDS YOUR GOAL

Ensuring our students receive enough individual attention is an important part of UCOL's approach to learning. We keep our classes small so that you can get the help you need to be successful from our experienced and knowledgeable lecturing staff. You can be sure you will be studying an approved quality educational programme. We also believe it is important for UCOL lecturers to have the use of the latest technology in our teaching, and to provide this technology to our students for their study. We have developed a state of the art learning environment using 3D overhead displays, video, Interactive Whiteboards, PowerPoint and other computer-based presentation tools. If you need to do practical assignments as part of your study programme, you will find UCOL has facilities similar to the best in the industry. Examples are our kitchens and restaurants, science labs and gymnasiums. Because UCOL is focused on helping you succeed we have student studios on our campuses which are fitted out with PCs, giving you access to a range of software, some free time on the internet and the ability to download programme material.

## UCOL ENROLMENT PROCESS

### STEP 1

To apply for a place on any of UCOL's programmes, use the Admission and Enrolment Form (International Students) tear out form in the centre of this Prospectus. If you are applying for a place in our Art or Design programmes, please enclose a suitable portfolio. These should be posted to: UCOL International Admissions, P.O. Box 11022, Palmerston North, New Zealand 4442, or your portfolio can be forwarded through an approved agent of UCOL.

### STEP 2

When UCOL has received your completed Admission and Enrolment Form (International Students) and proof of identity your application will be assessed.

### STEP 3

If satisfied with assessments, UCOL will then send you an Offer of Place letter. A Conditional Offer of Place will show any conditions you need to meet before you can come and study on the programme you have applied for.

### STEP 4

If UCOL decides you have met its requirements you will be advised by UCOL in writing. You will need to pay your tuition fees and all other costs set by UCOL (if any) to UCOL prior to programme commencement. You must also return a signed copy of the Acceptance Letter. As soon as we have received payment for the programme, we will confirm your place in writing, as well as sending a receipt to you to enable you to continue with your Visa application.

### STEP 5

Please ensure when you travel to New Zealand to start your programme of study that you bring all of your original documents already sent so they can be sighted and verified by UCOL staff to finalise your enrolment.





## STEPS TO APPLY FOR A STUDENT VISA

To apply for your student Visa, you will need to complete a *Student Visa Application (INZ 1012)*. Please read the *Student Visa Guide (NZ1013)* before you complete this form. These forms are available from [www.immigration.govt.nz](http://www.immigration.govt.nz)

### TO OBTAIN YOUR VISA YOU MUST

#### STEP 1

Complete the 'Application to Study in New Zealand' form. Attach to it a recent passport size photograph of yourself.

#### STEP 2

- Complete the 'Financial Undertaking' form, or
- Provide a bank statement showing evidence of funds to support yourself for your period of study (NZ\$15,000 per year minimum), as well as having sufficient funds to purchase an outward ticket.

#### STEP 3

Send these forms to the nearest New Zealand Diplomatic Post together with:

- The student Visa application fee (the New Zealand Diplomatic Post in your country will tell you what the fee is).
- Your passport or certificate of identity (note that your passport must be one that will not expire during your programme of study in New Zealand).
- UCOL's 'Offer of Place' letter.
- Your receipt for payment of fees.

If you plan to study in New Zealand for more than 12 months, then completed medical and chest x-ray certificates are required. The forms for these are also available from New Zealand Diplomatic Posts. If you are over 17 years of age, and planning to study in New Zealand for more than two years, a local police clearance is also required.

#### YOU MUST ALSO INCLUDE

- Evidence that medical and travel insurance has been arranged (this is a compulsory requirement). UCOL may refuse to re-enrol you, or may cancel your enrolment if you fail to comply with any insurance requirement(s) of UCOL.
- One or two character references.

Note: All original certificates requested (including your passport) should be provided with two photocopies. Full details of visa and permit requirements, advice on rights to employment in New Zealand while studying, and reporting requirements are available through the New Zealand Immigration Service and can be viewed on their website at: [www.immigration.govt.nz](http://www.immigration.govt.nz).

#### TERMS AND CONDITIONS OF YOUR ENROLMENT

Please ensure you read and fully understand the Terms & Conditions of your Application/Enrolment as stated in the Admission and Enrolment Form (International Students) and in this Prospectus.



## INTERNATIONAL STUDENT FEE REFUND POLICY

### PURPOSE

To provide the framework for assessing applications for refund of fees for international students.

### SCOPE

This is a UCOL wide policy.

### POLICY STATEMENTS

#### 1. POLICY STATEMENT

- 1.1 UCOL must receive payment in full of the tuition fees from an International Student no later than the first date teaching starts for the programme of study the International Student is enrolled in. If an International Student is permitted by UCOL to commence study after the first date teaching starts for the programme of study the International Student is enrolled in, payment in full of the tuition fees must be received by UCOL no later than the date that UCOL has advised the student in writing that they must start.
- 1.2 No refunds of tuition fees will be paid to International Students, except as expressly provided for in this policy.
- 1.3 This policy statement replaces all former UCOL policies and statutes in respect of refunds applying to International Students.

#### 2. WITHDRAWAL

- 2.1 An International Student can only Withdraw from a programme(s)/qualification at UCOL by completing, signing and returning to the UCOL Information Centre or Student Registry Services a UCOL Change of Details/ Circumstances form.
- 2.2 Except as expressly provided for in this policy, no refund will be granted to an International Student who does not Withdraw from a programme/qualification in accordance with Clause 2.1 above.
- 2.3 The Date of Withdrawal is the date that UCOL receives the Change of Circumstances/Student Withdrawal form signed and completed by the International Student as evidenced by the date on the UCOL receipt stamp.

#### 3. REFUNDS AS A RESULT OF WITHDRAWAL FROM A PROGRAMME/QUALIFICATION

- 3.1 The amount of a refund (if any) will depend on the Date of Withdrawal and/or the reason(s) for Withdrawal. Please refer to the table in Schedule A of this policy for the relevant Dates of Withdrawal and Partial Refunds that will be granted.

#### 4. REFUNDS AS A RESULT OF A CHANGE IN RESIDENCY STATUS

- 4.1 If an International Student gains Permanent Residency during their programme of study, the student will not receive a refund of fees for the enrolment period in which residency was granted unless:
  - (i) Residency was granted before the end of two weeks from the Programme Commencement Date; and
  - (ii) The International Student has Withdrawn in accordance with Clause 2.1 of this Policy and has enrolled at UCOL as a Domestic Student.

#### 5. REFUNDS IN OTHER CIRCUMSTANCES

- 5.1 At law, UCOL has the discretion to grant a full or partial refund to any student.
- 5.2 In special circumstances comprising reasons of a compassionate nature, UCOL at its sole option may grant a refund of a greater amount than is stated in this policy and/or may grant a refund outside the required timeframe for Withdrawal as stated in this policy. If an International Student believes that special circumstances of a compassionate nature exist, they must apply in writing to UCOL, enclosing supporting evidence of the special circumstances claimed and they must provide all other evidence requested by UCOL. UCOL will consider the request and may or may not grant a refund in an amount that UCOL deems appropriate.
- 5.3 If UCOL does not proceed with a programme/ qualification offered and UCOL has received tuition fees from an International Student for that programme/ qualification, UCOL will notify the International Student in writing that UCOL will not be proceeding with the programme/qualification. Pursuant to Clause 5.1 above, UCOL will grant a full refund of the tuition fees received by UCOL from the International Student for that programme/qualification but UCOL shall not be liable to compensate the student for any fluctuations in currency in the intervening period or for any other costs incurred by the student whatsoever.

#### 6. PAYMENT OF REFUNDS

- 6.1 Refunds to International Students will be paid in New Zealand Dollars by cheque or bank draft and as directed in writing by the International Student. If UCOL does not receive such reasonable written directions within seven days of the Date of Withdrawal, UCOL will forward payment of the refund to the residential address of the International Student inserted on the Admission and Enrolment Form (International Students).

# SCHEDULE A

REASON FOR WITHDRAWAL	DATE OF WITHDRAWAL	AMOUNT OF REFUND
Refusal by New Zealand Immigration Service to grant an initial visa for study in New Zealand	Prior to the Programme Commencement Date	95% of the tuition fees received by UCOL from the International Student for the programme/qualification withdrawn from. <b>Note</b> Prospective students should not pay fees until such time as they have approval in writing of a "Visa in Principle" from the New Zealand Immigration Service.
The Student has decided not to study at <u>any</u> New Zealand Tertiary Institution for that particular Academic Year	Prior to the Programme Commencement Date	80% of the tuition fees received by UCOL from the International Student for the programme/qualification withdrawn from. <b>Note</b> If the student has already arrived in New Zealand they will be required to provide proof that they have returned to their normal Country of Residence.
The Student has decided to study at another New Zealand Tertiary Education provider	More than One Month Prior to the Programme Commencement Date	80% of the tuition fees received by UCOL from the International Student for the programme/qualification withdrawn from.
The Student has decided to study at another New Zealand Tertiary Education provider	Less than One Month Prior to the Programme Commencement Date up to two weeks after the Programme Commencement Date	(i) Where this would have been the student's first year of study at UCOL – 20% of the tuition fees received by UCOL from the International Student for the programme/qualification withdrawn from. (ii) Where this would have been the student's second or subsequent year of study at UCOL - 70% of the tuition fees received by UCOL from the International Student for the programme/qualification withdrawn from.
Student has decided to return home	Within the first two weeks after the Programme Commencement Date	70% of the tuition fees received by UCOL from the International Student for the programme/qualification withdrawn from. <b>Note</b> If the student has already arrived in New Zealand they will be required to provide proof that they have returned to their normal Country of Residence.
Any other reason	More than two weeks after the Programme Commencement Date	Nil – no refund will be provided

## CHANGING DETAILS OR PROGRAMMES?

### CHANGING YOUR DETAILS/CIRCUMSTANCES

You must fill out the UCOL Change of Details/Circumstances Form, sign it, date it and return it to Student Registry Services or the UCOL Information Centre if you:

- Wish to withdraw from or change your programme(s), subject(s) or any qualification(s) you wish to study towards at any time after you have provisionally enrolled at UCOL; and/or
- Change your name, contact details, residency or citizenship; and/or
- Wish to enrol in any additional programme(s) or study for additional qualification(s).

These forms are available from our Information Centre or Student Registry Services or by phoning UCOL on 0800 GO UCOL (0800 46 8265) (if calling from within New Zealand) or +64 6 952 7000.

### CHANGING PROGRAMMES AND/OR QUALIFICATIONS

If you wish to change programme(s)/qualification(s) after you have provisionally enrolled then you must withdraw from the programme(s)/ qualification(s) you no longer wish to take and go through the enrolment process for the new programme(s)/qualification(s). UCOL's Withdrawal Policy and Refund Policy for International Students will apply in respect to the programme(s)/qualification(s) you withdrew from. If you change programme(s)/qualification(s) after the relevant refund period for International Students then you will have to pay the tuition fees and all other UCOL fees for the programme(s)/qualification(s) you first enrolled in and the full fees for the programme(s)/qualification(s) you transfer to. You must also have your student visa altered to permit your study in the new qualification.

## DEFINITIONS

**Programme Commencement Date** – This is the first day on which teaching starts on the programme of study that the International Student is enrolled in.

**Enrolment Form** – This is the form that the International Student signed in order to enrol at UCOL.

### International Student

An International Student is a person:

- Who is a foreign student as defined in Section 2 or Section 159 of the Education Act 1989 and who is studying in New Zealand on a student permit under the Immigration Act 1987, and
- Who has entered into an enrolment agreement with UCOL for the period of one academic year (or the length of the programme if it is less than one year).

**Partial Refund** - A partial refund is the payment of a certain percentage of the tuition fees received by UCOL from the International Student in accordance with this Policy.

**Withdrawal** - A Withdrawal is whereby UCOL's Information Centre or Student Registry Services receives a signed, completed Change of Details/Circumstances form in accordance with Clause 2.1 of this Policy.





International students at the markets, Palmerston North

## LATE START FEE

1. All international students are required to arrive in New Zealand at least one week prior to the published commencement date of their chosen programme of study. If an international student cannot ensure that they will be able to arrive at least one week prior to the published commencement date then they should consider deferring their application to the next available intake of their chosen programme of study.

2. Any international student that arrives after the published commencement date of their programme without reasonable excuse or without the prior approval of the UCOL Dean of Admissions will be liable to pay a 'late start fee' if they wish to commence as per the following table:

ARRIVAL DATE	LATE START FEE where student has the Prior Written Approval of the UCOL Dean of Admissions	LATE START FEE where student does not have the Prior Written Approval of the UCOL Dean of Admissions
As required, one week prior to published commencement date	Nil	Nil
After the published commencement date but less than one week later	Nil	5% of tuition fees
After the published commencement date but more than one week later and less than two weeks later	Nil	10% of tuition fees
After the published commencement date but more than two weeks later and less than 3 weeks later	Not Applicable – Dean of Admissions will not approve any request for late commencement of more than two weeks after published course commencement date	15% of tuition fees
More than 3 weeks after the published commencement date	Not Applicable – Dean of Admissions will not approve any request for late commencement of more than two weeks after published course commencement date	Not Applicable – Student will not be allowed to commence

3. Any late start fee must be paid in full before the end of the chosen programme of study. If the fee is not paid the student will not be eligible to graduate.

4. If an international student, having arrived after the start date does not wish to pay the late start fee, they have the option of not commencing and immediately returning to their home country. In all cases UCOL's refund conditions for international students will apply.

5. The late start fee will not apply to any international student that has the prior approval of the Dean of Admissions to start after the commencement date, provided that they arrive on or before the approved date. If the student arrives after the Dean of Admission's approved date, the late start fee will apply.

6. Where an international student commences their programme of study after the start date, UCOL does not undertake to provide additional assistance for them to catch up on those parts of the programme they have been absent for. If private tuition is required in order to repeat components of the programme that are essential before the student can progress (e.g. Health and Safety Orientation), UCOL reserves the right to charge additional fees for that private tuition.

# TERMS & CONDITIONS FOR INTERNATIONAL STUDENTS

## 1. UCOL'S LIMITATION OF LIABILITY

In signing the Admission and Enrolment Form (International Students), you agree that, to the extent permitted at law, UCOL's liability to you, however it arises, if established, is limited to the amount of the tuition fees that you pay to UCOL for the enrolment period in which the liability arises.

## 2. DISPUTES AND COMPLAINTS

In signing the Admission and Enrolment Form (International Students) you agree to abide by UCOL's statutes and policies for resolving disputes and complaints.

## 3. EVENTS BEYOND UCOL'S CONTROL

If UCOL is unable to perform its obligations by reason of riot, earthquake, volcanic activity, fire, storm, strike, lockout, acts of terror, outbreak of illness, operation of law or other like cause beyond the control of UCOL, then UCOL shall be released from its obligations if and to the extent that UCOL is prevented or delayed from performing by reason of that force majeure, but without prejudice to any pre-existing claim or pre-existing liability.

## 4. PRIVACY

In signing the Admission and Enrolment Form (International Students) you acknowledge that:

UCOL collects and stores information about you. Some of this information is and will be provided by you. Some of it will be collected by UCOL in the programme of your enrolment at UCOL. UCOL will disclose such information to other organisations such as the Ministry of Education (funding and student statistical returns), New Zealand Qualifications Authority (Record of Learning registration and Unit Standard outcomes), Tertiary Education Commission, Industry Training Organisations (funding and academic outcomes), the Nursing Council, the Professional Registration Board, Ministry of Social Development (confirmation of enrolment and academic outcomes), Inland Revenue Department (student loan interest rebate), AS@U, Department of Immigration and any agencies or others who support particular students through scholarships and prizes, payment of fees or other awards (if you are a recipient of one of these awards). UCOL may also use such information for marketing purposes, to select students for qualifications, to manage internal administrative processes and for internal reporting. Information about students may be supplied to, and sought from, other educational institutions for the purpose of verifying academic records or otherwise.

In addition, you agree that UCOL may release information about you to Government agencies such as the New Zealand Police, Department for Courts, Department of Corrections, Department of Immigration and the Accident Rehabilitation Compensation Insurance Corporation.

In signing the Admission and Enrolment Form (International Students) you authorise the collection, holding and disclosure referred to above.

Under the Privacy Act 1993 you may ask UCOL to provide you with copies of the information it holds about you. If you disagree with any such information you may ask to have it corrected.



Students studying in the Palmerston North campus atrium

## 5. PROGRAMME(S)/QUALIFICATION(S) CANCELLATIONS/ POSTPONEMENTS

UCOL may at its discretion at any time (whether before or after a programme(s)/qualification(s) has started, or whether or not a UCOL programme(s)/qualification has been partially completed) for any reason cancel any programme(s) or qualification(s) offered. If a programme(s) is cancelled or a qualification not offered, fees paid (not including fees for preceding enrolment periods) will be refunded to you, or to the person or organisation who paid them on your behalf. Under these circumstances no form of compensation will be paid by UCOL to you, or to the person or organisation who originally paid your fees.

UCOL may also postpone the start date of a programme(s) or start date of study for a qualification offered. If the new start date does not suit you we will refund the fees to you, or to the person or organisation who paid them. No compensation is payable by UCOL to you or anyone else. If you have partially completed programme(s)/qualification(s), UCOL may still cancel the programme(s)/qualification(s) and no compensation is payable.

No compensation will be payable to you by UCOL for the cancellation by UCOL of a programme(s)/qualification(s), for any reason, regardless of whether you have completed a number of days, weeks or months of a programme(s)/qualification(s), or whether you have completed one or more years towards a qualification.

In enrolling at UCOL you acknowledge that UCOL may decide to cancel or postpone programme(s)/qualification(s) from time to time for a variety of reasons including (but not limited to) insufficient participants, financial constraints and resourcing issues.

If you are studying at UCOL but offshore you acknowledge that UCOL may deliver the programme by distance if circumstances arise that UCOL deem it desirable.

## 6. Provisional Enrolment at UCOL

- 6.1 Your admission and enrolment is provisional on:
- (i) UCOL being satisfied as to your identity and being satisfied, based on all the information you have supplied, that UCOL ought to confirm your enrolment; and
  - (ii) UCOL selecting you for a place, if places in the qualification(s)/paper(s) you have selected are limited; and
  - (iii) UCOL being satisfied that you meet the entry criteria (if any) and the English competency requirements; and
  - (iv) UCOL sighting your passport containing evidence that you have the permit/visa to study at UCOL in the qualification(s); and UCOL receiving evidence of insurance policies for travel and health.
  - (v) UCOL receiving in full all of UCOL's tuition fees, all other costs set by UCOL (if any) and Students' Association fees (where applicable); and
  - (vi) If UCOL offers you a place, UCOL receiving your acceptance of that offer before its expiry.
- 6.2 UCOL may, in its sole discretion, waive, in writing, some of the conditions in paragraph 6.1.

## 7. UCOL Statutes and Policies

- 7.1 You agree to be bound by UCOL's statutes, code of conduct and policies including all new and amended statutes, code of conduct and policies.

## 8. Refunds, Withdrawals and Changing Qualifications

- 8.1 The International Student Refund Policy in this International Prospectus forms part of your enrolment contract with UCOL.
- 8.2 Before applying for admission and enrolment you acknowledge you have read it and understand it.
- 8.3 The International Student Refund Policy in this Prospectus also contains provisions on what you must do if you want to change your course(s)/qualification(s) or withdrawal from study at UCOL.

## 9. Professional Occupation Registration

- 9.1 You agree that if entry into a profession/occupation is regulated by law, then UCOL makes no representation about entry into the profession/occupation in respect of your study at UCOL. Entry into that profession/occupation is subject to the applicable law, regulations and rules of the profession/occupation concerned.

## 10. Payment of Fees

- 10.1 If UCOL offers you a place and if UCOL receive acceptance of that offer then you:
- (i) Agree to pay to UCOL all UCOL tuition fees and all other UCOL fees before the first date teaching starts for your qualification.
  - (ii) If UCOL allows you to start study after the first date that teaching starts then you agree to pay all UCOL fees before the date you are due to start studying together with the late start fee specified in the UCOL Prospectus for International Students.
  - (iii) Even if you do not attend you will be required to pay all UCOL tuition fees and all other UCOL prescribed fees unless UCOL receives your withdrawal in the manner required by UCOL within the time required by UCOL for international students.

## 11. Information Supplied

- 11.1 You have attached to the Admission and Enrolment Form (International Students) (or agree to promptly send) certified proof of your highest level of achievement at secondary school and previous/current study (if any).

## 12. Visa Insurance

- 12.1 You agree to provide UCOL with evidence of an appropriate permit/visa and medical insurance for the duration for your enrolment at UCOL, if you do not have a valid permit/visa or medical insurance then UCOL may cancel your enrolment.

## 13. Information Received

You acknowledge that you have received current and complete information concerning:

- (i) All tuition fees, course costs and items required to be supplied by you associated with your nominated programme of study;
- (ii) UCOL's application requirements and conditions of acceptance;
- (iii) Refund conditions;
- (iv) English language proficiency requirements;
- (v) UCOL's staffing, facilities and equipment;
- (vi) The qualification(s) UCOL offers;
- (vii) Medical and travel insurance requirements;
- (viii) Types of accommodation available in New Zealand;
- (ix) A summary of the Code of Practice for the Pastoral Care of International Students.



# PROGRAMME MATRIX

PROGRAMME NAME	LENGTH	LEVEL	FEES (NZ\$)	LOCATION	IELTS	INTAKES	PAGE #
<b>BUSINESS &amp; ADMINISTRATION</b>							
New Zealand Diploma in Business	2 years	6	14,610	PN, WG	6.0	February & July	10
Certificate in Business Studies	1 year	4	14,610	PN, WG	5.5	February & July	54
National Certificate in Business Administration	1 semester	4	7,865	PN, WG, MAS	5.5	July	54
National Certificate in Business Administration & Computing	1 semester	3	7,850	PN, WG, MAS	5.5	February & July (PN), July (WG), February (MAS)	54
<b>INFORMATION SYSTEMS &amp; COMPUTING</b>							
Bachelor of Information and Communications Technology (Applied)	3 years	7	16,015	PN	6.0	March & July	32
Graduate Diploma in Information and Communications Technology	1 year	7	16,015	PN	6.0	March & July	35
Diploma in Information and Communications Technology (Applied)	1 year	5 & 6	16,015	PN	6.0	March & July	34
Certificate for Advanced Computer Users	1 semester	4	7,635	PN	5.5	February & July	54
Certificate in Information Technology for Business	1 semester	3	7,650	PN	5.5	February & July	54
<b>HEALTH &amp; SCIENCE</b>							
Graduate Diploma in Nursing	1 year	7	22,500	PN	7.0*	Various	36
Bachelor of Nursing	3 years	7	17,885	PN	6.5*	February & July	38
Short Course in Competency Assessment for Registered Nurses	up to 12 weeks	7	6,540	PN	7.0*	3 - 4 per year	39
Diploma in Veterinary Nursing	2 years	6	16,950	PN	6.0	January	46
National Diploma in Science	2 years	5 & 6	16,715	PN	6.0	February & July	42
Certificate in Science & Health	1 year	3	16,715	PN, WG	5.5	February	54
<b>SPORT &amp; FITNESS</b>							
Postgraduate Diploma in Clinical Exercise Physiology	1 year	8	29,520	PN	6.5	February, August	43
Bachelor of Exercise and Sport Science	3 years	7	17,535	PN	6.0	February	44
Certificate in Exercise and Sport Performance	1 year	4	15,265	PN, WG, MAS	5.5	February	54
<b>TECHNOLOGY, TRADES &amp; INDUSTRY</b>							
New Zealand Diploma in Engineering - Electrical (Power Specialisation)	2 years	6	18,220	PN	6.0	February	14
Diploma in Construction	1 year	5	18,775	PN	6.0	February	54
Diploma in Furniture Design and Making	2 years	5	16,950	PN	6.0	February	23
Certificate in Carpentry	1 year	4	16,715	PN, MAS	5.5	February & July (PN), February (MAS)	54
<b>FASHION &amp; BEAUTY</b>							
Bachelor of Fashion	3 years	7	18,755	WG	6.0	February	16
Graduate Diploma in Fashion	1 year	7	18,755	WG	6.5	February	17
Diploma in Beauty Therapy	1 year	5	15,700	PN, WG, MAS	6.0	February	54
Certificate in Beauty Services	1 year	4	16,755	PN, WG, MAS	5.5	February	54
Certificate in Fashion	1 year	4	15,265	WG	5.5	February	55
<b>HOSPITALITY</b>							
Diploma in Professional Chef Practice	2 years	5	18,490	WG	5.5	Various	13
<b>PHOTOGRAPHY, ARTS &amp; DESIGN</b>							
Master of Computer Graphic Design	1 year (minimum)	9	18,975	WG	6.5	February	30
Bachelor of Computer Graphic Design (Honours)	1 year	8	18,755	WG	6.5	February	28
Post Graduate Diploma of Computer Graphic Design	1 year	8	18,755	WG	6.5	February	29
Bachelor of Computer Graphic Design	3 years	7	18,083	WG	6.0	February	26
Graduate Diploma in Animation	1 year	7	18,083	WG	6.0	February	31
Bachelor of Fine Arts	4 years	7	17,885	WG	6.0	February	18
Graduate Diploma in Fine Arts	1 year	7	17,885	WG	6.0	February	17
Bachelor of Applied Visual Imaging	3 years	7	18,083	PN	6.0	February	48
Diploma in Glass Design and Production	3 years	6	16,480	WG	6.0	February	24
Diploma in Photographic Imaging	2 years	6	18,755	PN	6.0	February	41
Diploma in Interior Design	1 year	5	18,585	PN	6.0	February & July	55
Diploma in Performing Arts	1 year	5	18,585	PN	6.0	February	55
Certificate in Art and Design	1 year	4	15,265	PN, WG	5.5	February & July	55

## KEY

PN = Palmerston North  
 MAS = Masterton  
 WG = Whanganui

\* There are additional entry requirements for these programmes, please contact UCOL for further information.





**UCOL PALMERSTON NORTH**

Cnr Princess and King Streets  
Private Bag 11022  
Palmerston North  
New Zealand 4442

**UCOL WHANGANUI**

16 Rutland Street  
Private Bag 3020  
Whanganui  
New Zealand 4500

**Phone** +64 6 952 7000 **Email** [internationalstudent@ucol.ac.nz](mailto:internationalstudent@ucol.ac.nz) **Website** [www.ucol.ac.nz/international](http://www.ucol.ac.nz/international)  
**Postal** Private Bag 11022, Palmerston North, New Zealand 4442